

Note:

To activate the links in the brochure, open it as a PDF file by clicking the PDF icon in the lower left hand corner of your screen.

PROFILE 2015 2016



AARHUS UNIVERSITY





Solidum petit in profundis
We seek solid ground in the depths

CONTENTS

MEET AARHUS UNIVERSITY

Knowledge that benefits society	4
An insistence on quality	6
Deep insight, wide horizons	8

RESEARCH

A strong commitment to excellence	10
A research-intensive university	12
State-of-the-art research facilities	14

EDUCATION

Graduates are the most important contribution to society	16
Academic excellence + a good study environment = attractive degree programmes	18
Study environments without borders	20

COLLABORATION

Collaboration puts knowledge to work	22
Knowledge creates development and growth	24
Researchers advise government	26
Lifelong learning uplifts society	28

TALENT

Research talents unfold	30
Room to develop unique talents	32

CAMPUS

One university – many locations	34
Aarhus University's locations	36
Campuses in three cities	38
Northern Europe's largest student event	42

AARHUS UNIVERSITY IN PICTURES



The distinctive Main Hall, the heart of Aarhus University's original main building, towers over the University Park. The buildings on the central Aarhus University campus were designed by the Danish architect C.F. Møller and are today recognised as a uniquely cohesive architectural expression. Read more in the campus section on page 38.

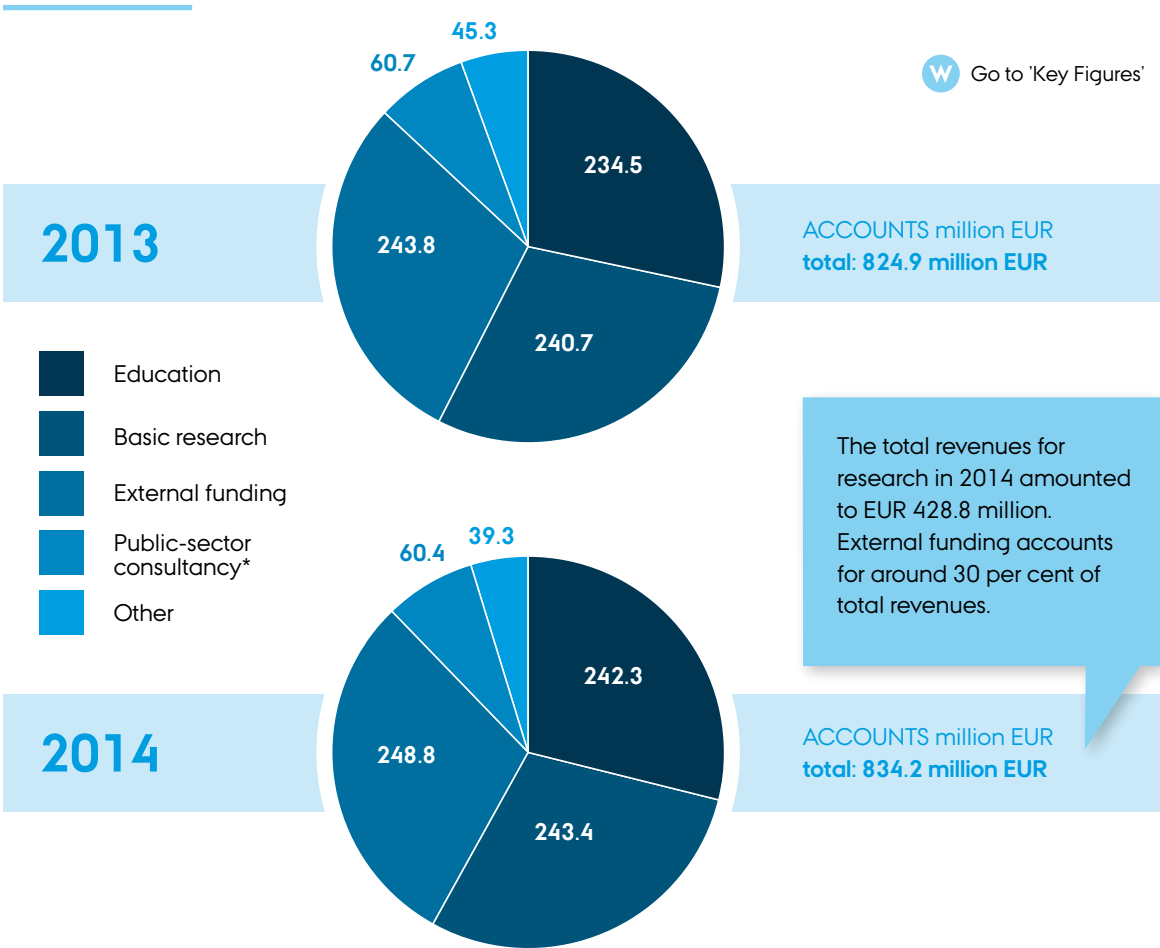


KNOWLEDGE THAT BENEFITS SOCIETY

Aarhus University stands for quality and the continued pursuit of excellence in research and research-based education. Knowledge exchange, talent development and collaboration with society are high priorities.

AN INSISTENCE ON QUALITY

Aarhus University strives for the highest possible quality. By virtue of its size and research results, the university has a solid platform both in Denmark and abroad, and the university has high ambitions for the future. The Aarhus University of today is a globally oriented, academically diverse and research-intensive university with four faculties: Arts, Aarhus BSS, Health, and Science and Technology. Established in 1928 on the initiative of local citizens, the university is a relatively young institution. Today, Aarhus University is a public university with considerable international impact.



MISSION

Aarhus University is an academically diverse and strongly research-oriented institution that creates and shares knowledge.

VISION

Aarhus University strives to be a leading globally-oriented university with a strong engagement in the development of society.

VALUES

The university defends the research freedom of individuals and desires to maintain and develop a culture that promotes collaboration, critical dialogue, curiosity and the independent search for new knowledge and insight.



Read Aarhus University's Strategy 2013-2020

44,000

BACHELOR'S, MASTER'S, PHD AND PART-TIME STUDENTS (2014)

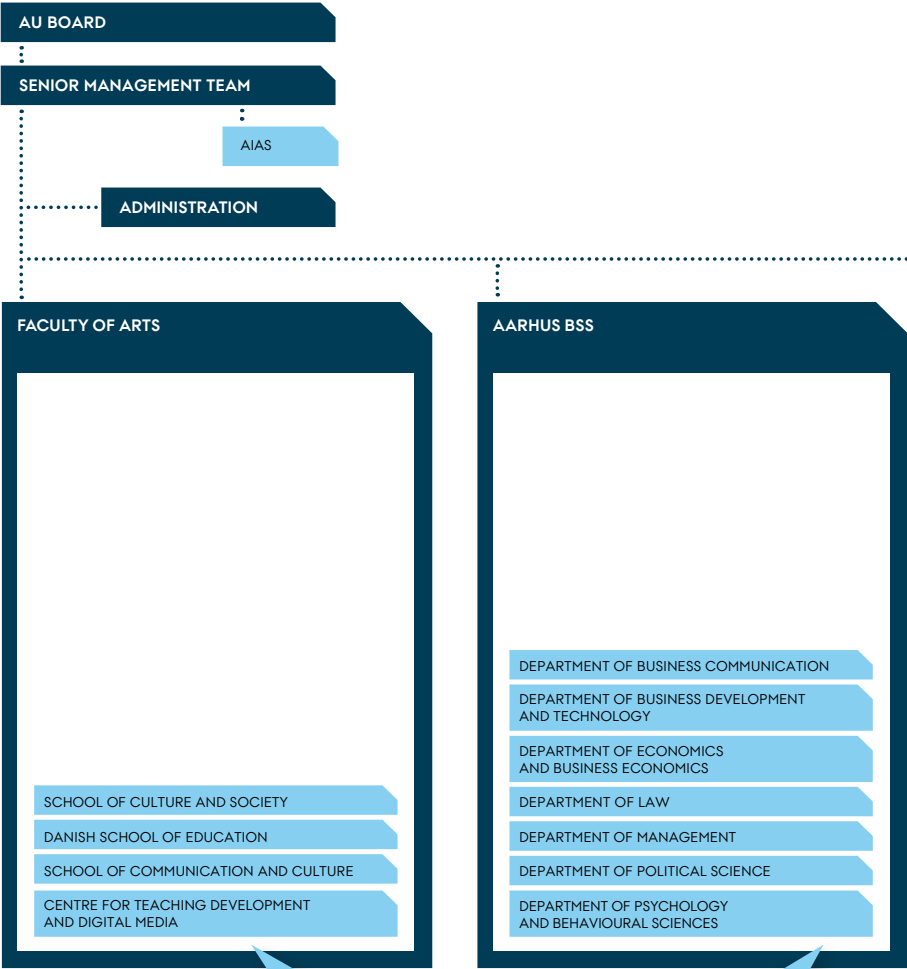
8,000

EMPLOYEES (2014, EXPRESSED IN FTES)

834.2 MILLION EUR

IN REVENUE (2014)

DEEP INSIGHT, WIDE HORIZONS



Arts (2014):
14,205 students
250 PhD students
950 employees (FTEs)
142.3 million EUR in turnover

Aarhus BSS – School of Business and Social Sciences (2014)
16,859 students
238 PhD students
875 employees (FTEs)
143 million EUR in turnover

FOUR CORE ACTIVITIES

- Research
- Education
- Collaboration
- Talent development

With its four faculties, Aarhus University spans the entire research spectrum. And through its activities, the university reaches out to all sectors of society. The university combines an emphasis on depth of expertise within individual fields of inquiry with cross-disciplinary collaboration in research, education, talent development and partnerships with private and public businesses and institutions.

W Click on the units in the organisational chart to go to their respective websites

AARHUS
UNIVERSITY HOSPITAL

FACULTY OF HEALTH

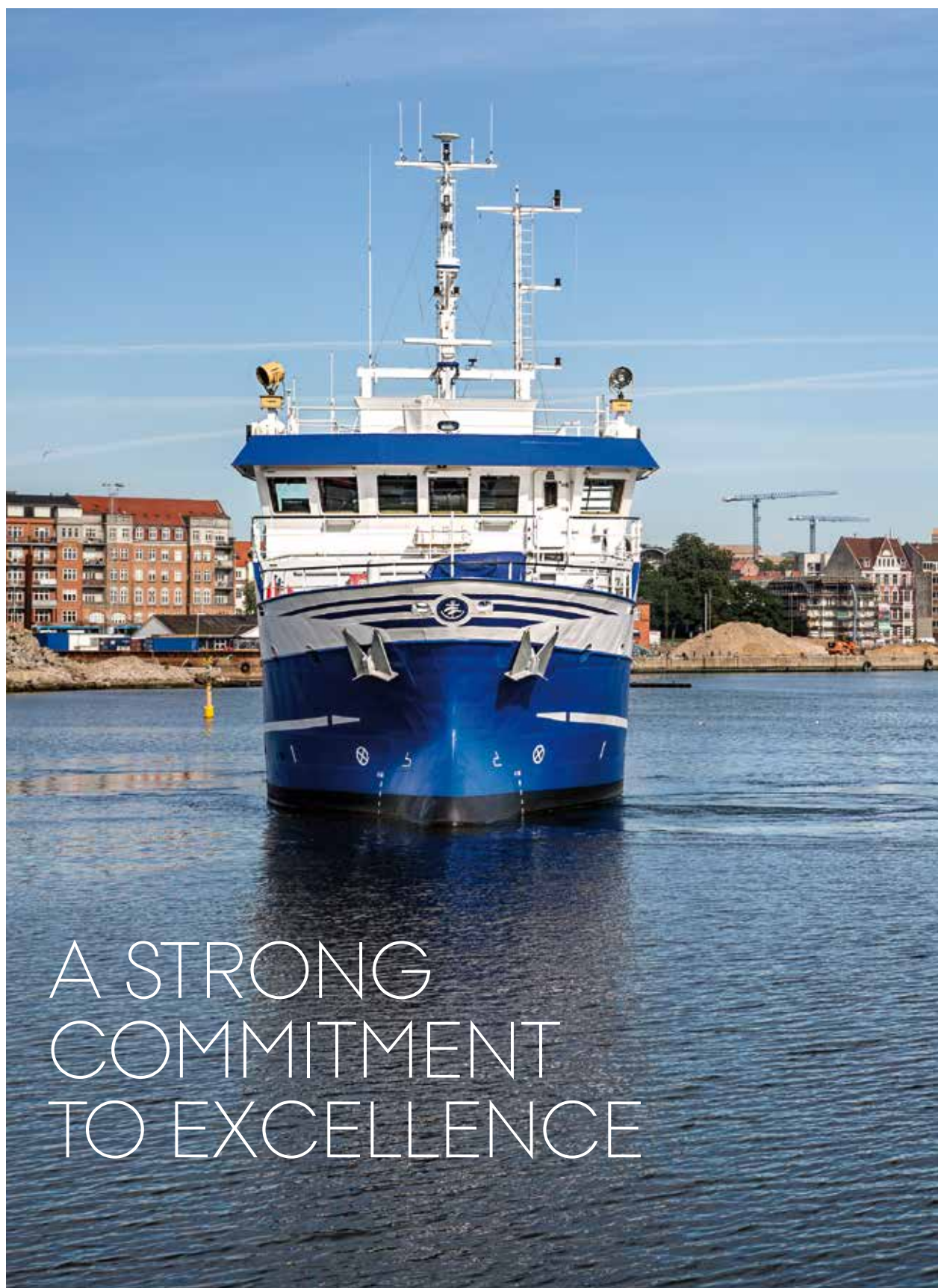
DEPARTMENT OF BIOMEDICINE
DEPARTMENT OF PUBLIC HEALTH
DEPARTMENT OF CLINICAL MEDICINE
DEPARTMENT OF DENTISTRY
DEPARTMENT OF FORENSIC MEDICINE
SCHOOL FOR DENTAL ASSISTANTS,
HYGIENISTS AND CLINICAL TECHNICIANS

Health (2014):
5,214 students
644 PhD students
1.062 employees (FTEs)
174.6 million EUR in turnover

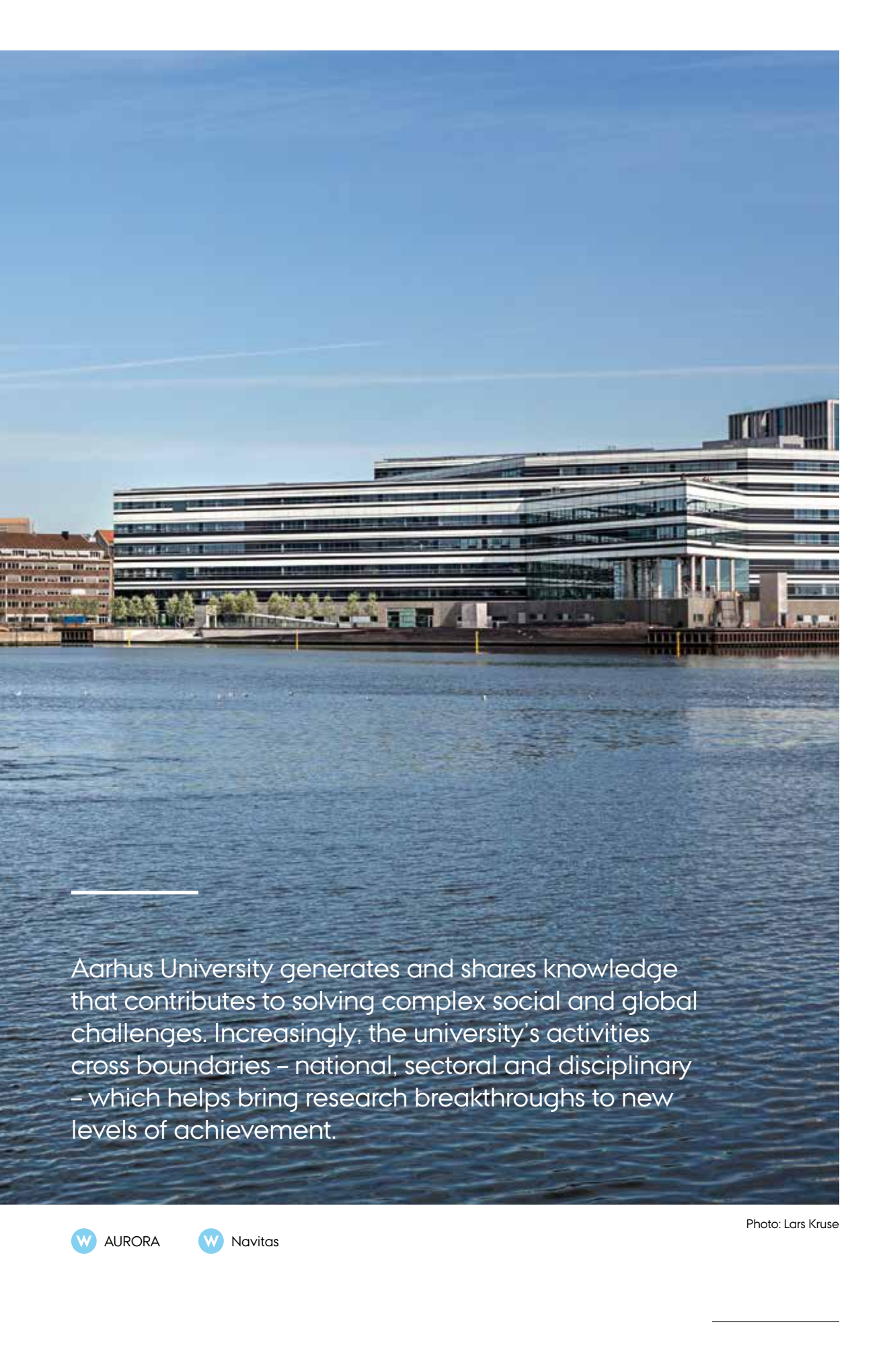
FACULTY OF SCIENCE AND TECHNOLOGY

AARHUS UNIVERSITY SCHOOL OF ENGINEERING
DEPARTMENT OF AGROECOLOGY
DEPARTMENT OF BIOSCIENCE
DEPARTMENT OF COMPUTER SCIENCE
DEPARTMENT OF PHYSICS AND ASTRONOMY
DEPARTMENT OF FOOD SCIENCE
DEPARTMENT OF GEOSCIENCE
DEPARTMENT OF ANIMAL SCIENCE
DEPARTMENT OF ENGINEERING
DEPARTMENT OF CHEMISTRY
DEPARTMENT OF MATHEMATICS
DEPARTMENT OF ENVIRONMENTAL SCIENCE
DEPARTMENT OF MOLECULAR BIOLOGY AND GENETICS
INANO
DANISH CENTRE FOR FOOD AND AGRICULTURE (DCA)
DANISH CENTRE FOR ENVIRONMENT AND ENERGY (DCE)

Science and Technology (2014):
8,090 students
695 PhD students
2.145 employees (FTEs)
351.4 million EUR in turnover



Aurora is Aarhus University's state-of-the-art research vessel, here seen entering the Port of Aarhus. The spectacular Navitas building is visible in the background: a leading international technology and science milieu and a centre for education, research, innovation and entrepreneurship. Part of the engineering programme is located here. Read more about Aurora on page 14.



Aarhus University generates and shares knowledge that contributes to solving complex social and global challenges. Increasingly, the university's activities cross boundaries – national, sectoral and disciplinary – which helps bring research breakthroughs to new levels of achievement.

PUBLICATIONS/CITATIONS

Scientific publications from researchers at Aarhus University have a 22 per cent higher citation rate than the world average (CWTS Leiden Ranking, 2015).


NOBEL PRIZES

Nobel Prize in Chemistry (1997) to Emeritus Professor, MD, DMSc Jens Christian Skou for his work on the sodium-potassium pump.

Nobel Prize in Economics (2010) to Professor Dale T. Mortensen, Northwestern University and Aarhus University (now deceased), in recognition of work on the labour market.

A RESEARCH-INTENSIVE UNIVERSITY

Two Nobel Prize laureates in recent times, fourteen basic research centres, eight interdisciplinary centres and numerous other research centres, both large and small, all help Aarhus University achieve a high ranking on the most important international ranking lists. Today, Aarhus ranks among the top-100 universities in the world on several of these – out of over 17,000 universities worldwide. This position enables Aarhus University to attract and retain talented students, researchers and partners from the entire world.

 Click on the units to go to their respective websites

FACULTY OF ARTS

BASIC RESEARCH CENTRE

- Centre for Urban Network Evolutions (UrbNet)

OTHER MAJOR RESEARCH CENTRES*

- Aarhus University Research on the Anthropocene (AURA)
- Centre for Advanced Visualization and Interaction (CAVI)
- Centre for Biocultural History

INTERDISCIPLINARY CENTRES

- The Interacting Minds Centre (IMC) (together with Arts, BSS, HE and ST**)
- Participatory Information Technology Centre (PIT) (Together with ST**)



772

Academic staff members (FTEs)

250

PhD students

ARTS Faculty of Arts **BSS** Aarhus BSS – School of Business and Social Sciences **HE** Faculty of Health **ST** Faculty of Science and Technology

*This is not a complete list of the university's centres. Please see au.dk or faculty websites for complete lists.

**In collaboration with other faculties indicated by the abbreviations above.

AARHUS BSS – SCHOOL OF BUSINESS AND SOCIAL SCIENCES

Holds three international accreditations (AACSB, AMBA and EQUIS) – an honour held by just one per cent of the world's business schools.

BASIC RESEARCH CENTRES

- Centre on Autobiographical Memory Research (CON AMORE)
- Center for Research in Econometric Analysis of Time Series (CREATES)

OTHER MAJOR RESEARCH CENTRES*

- Centre for Alcohol and Drug Research (CRF)
- MAPP Centre – Research on Value

Creation in the Food Sector for Consumers, Industry and Society

- Danish Centre for Studies in Research and Research Policy (CFA)
- National Centre for Register-based Research (NCRR)
- TrygFonden's Centre for Child Research (together with HE**)
- The Tuborg Research Centre for Globalisation and Firms

INTERDISCIPLINARY CENTRE

- Centre for Integrated Register-based Research (CIRRAU) (together with HE and ST**)



712

Academic staff members (FTEs)

238

PhD students

FACULTY OF HEALTH

ERC STARTING GRANTS (2014)

- Group Leader Keisuke Yonehara, DANDRITE, Department of Biomedicine

BASIC RESEARCH CENTRE

- Music in the Brain

OTHER MAJOR RESEARCH CENTRES*

- Danish Centre for Interventional Research in Radiation Oncology (CIRRO)
- Center for Translational Molecular Diagnostics and Bioinformatic Risk Assignment in Common Cancer Diseases – Lundbeck Foundation Centre (CETAME)

- Center of Functionally Integrative Neuroscience (CFIN)
- Danish-Chinese Centre for Proteases and Cancer
- MIND – a Lundbeck Foundation Research Center
- MEMBRANES
- Mental Health in Primary Care (MEPRICA)

INTERDISCIPLINARY CENTRES

- Centre for Integrative Sequencing (iSEQ) (together with ST and BSS**)
- MINDLab (collaboration across several faculties and departments)



778

Academic staff members (FTEs)

644

PhD students

FACULTY OF SCIENCE AND TECHNOLOGY

ERC STARTING GRANTS (2014)

- Postdoc Jan-Pieter Buylaert, Department of Geoscience
- Associate Professor Jacob Sherson, Department of Physics and Astronomy
- Assistant Professor Bjørn Panyella Pedersen, Department of Molecular Biology and Genetics

ERC CONSOLIDATOR GRANTS (2014)

- Professor Anders Møller, Department of Computer Science
- Associate Professor Liv Hornekaer, Department of Physics and Astronomy/iNANO

ERC ADVANCED GRANTS (2014)

- Professor Ivan Damgård, Department of Computer Science

BASIC RESEARCH CENTRES

- Centre for Carbohydrate Recognition and Signalling (CARB)•
- Carbon Dioxide Activation Centre (CADIAC)
- Centre for DNA Nanotechnology (CDNA)
- Center for Geomicrobiology
- Center for Insoluble Protein Structures (INSPIN)

- Centre for Quantum Geometry of Moduli Spaces (QGM)
- Center for Massive Data Algorithmics (MADALGO)
- Centre for Materials Crystallography (CMC)
- Centre for Membrane Pumps in Cells and Disease (PUMPkin)•
- Centre for mRNP Biogenesis and Metabolism
- Stellar Astrophysics Centre

OTHER MAJOR RESEARCH CENTRES*

- Bioinformatics Research Centre (BIRC)
- International Centre for Research in Organic Food Systems (ICROFS)

INTERDISCIPLINARY CENTRES

- Arctic Research Centre (ARC) (Together with Arts, BSS, HE and ST**)
- Danish Research Institute of Translational Neuroscience (DANDRITE) (together with HE**)
- Interdisciplinary Nanoscience Centre (iNANO) (several departments involved)



1,667

Academic staff members (FTEs)

695

PhD students

STATE-OF-THE-ART RESEARCH FACILITIES

Aarhus University continually develops its physical research infrastructure to provide the right conditions for scientific breakthroughs. Aarhus University's research facilities are much in demand and are used by the university's own researchers as well as partners in Denmark and abroad.



Click on the titles to go to their respective websites

AURORA

A state-of-the-art flexible research vessel that serves as a floating laboratory for biologists, geologists, geophysicists and ocean researchers from other fields. The vessel was launched in 2014 and is used in close cooperation with other universities, businesses and other partners.



DAGMAR

Danish Genetically Modified Animal Resource gives researchers access to the most advanced transgenic animal models, from the nematode *C. elegans* to mice, zebra fish and minipigs. The vision is to provide optimal support for translational research and innovation by creating a unique flow from molecular physiology studies in zebrafish and mice to preclinical research in transgenic minipigs.



Cognition and Behavior Lab

A two-storey laboratory with state-of-the-art facilities for evidence-based research in human behaviour and cognition, primarily within economics, political science, psychology, linguistics, marketing and management. Among other equipment, the lab has two eye trackers that can monitor physiological parameters such as changes in pulse, breathing and muscle activity when the eye is subjected to different visual stimuli. Inaugurated in 2013.



Digital Humanities Laboratory (DIGHUMLAB)

A digital research lab that works to promote digital resources and tools to humanities and social science researchers. DIGHUMLAB is a national consortium based at Aarhus University. The consortium members are Aalborg University, Aarhus University, the University of Copenhagen, the University of Southern Denmark, the Royal Library and the State and University Library. Established in 2010.



Foulum: biogas and HTL plants

Foulum is Denmark's centre for the development of the bio-based economy. An advanced biogas plant and an HTL plant make it possible to perform ground-breaking research of decisive importance in relation to CO₂ reduction and energy supply.



GenomeDK

A supercomputer that uses advanced sequencing technologies to integrate and analyse large data sets from the unique Danish registry systems and biobanks combined with cell and animal models. The GenomeDK supercomputer is part of the iSEQ research centre, which is particularly focused on research to develop improved therapies for serious medical conditions including cancer and psychiatric disorders.



Hyperpolarised MRI scanner

An advanced magnetic resonance scanner enhanced by hyperpolarisation that is used in medical imaging to diagnose and treat disease. This form of MRI is expected to lead to an increased understanding of – and better therapies for – some of the most common diseases in the Western world, such as cancer, diabetes, obesity and cardiovascular disease. Installed in 2014. Denmark was the third country in Europe to acquire MRI hyperpolarisation technology.



The SONG telescope on Tenerife

The prototype of an ultra-modern robotic telescope for studying stars and planetary systems. The telescope is the first in the Danish-led telescope design and construction project SONG. The telescope is owned and operated by Aarhus University and the University of Copenhagen in collaboration with the Instituto de Astrofísica de Canarias on Tenerife.



Research stations in Greenland

Aarhus University has two research stations in Greenland: Zackenberg Research Station in the north-east and Villum Research Station in the far north. The latter was inaugurated in 2015. These stations are unique starting points for research into climate change in the High Arctic.



Danish Center for Ultrahigh Field NMR Spectroscopy

The largest of the centre's NMR spectrometers generates a magnetic field 500,000 times stronger than Earth's and is used to analyse substances at the molecular level. The spectrometers are used in developing medicines and new materials as well as in food research. Inaugurated in 2015.

GRADUATES ARE THE MOST IMPORTANT CONTRIBUTION TO SOCIETY

By providing research-based teaching of the highest quality in an attractive, open learning environment, Aarhus University educates graduates with strong academic competences and the skill sets society needs – for careers in academia as well as the public and private sectors.



Students in the field on the island of Samsø participating in an archaeological dig at a Viking Age site. The dig is one of many examples of the research-based courses Aarhus University offers all year round for Danish and international students.



[!\[\]\(c8d96c8885d3000a912c2582004aed63_img.jpg\) Read more about Aarhus University's degree programmes](#)

Photo: Jesper Rais

ACADEMIC
EXCELLENCE

+

A GOOD STUDY
ENVIRONMENT

=

ATTRACTIVE
DEGREE
PROGRAMMES

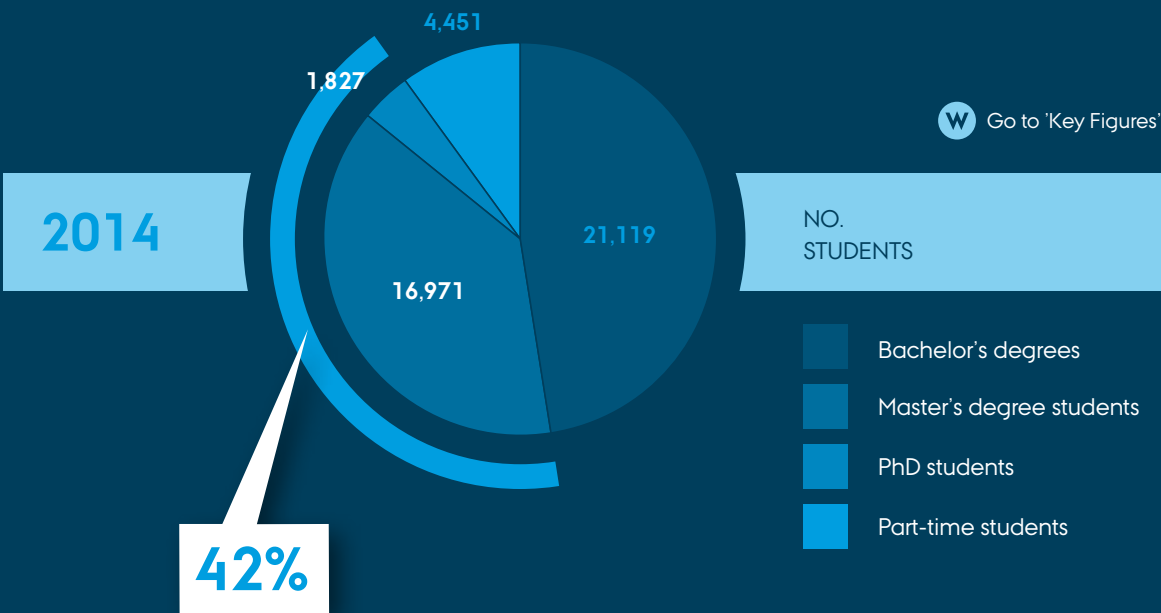
Each year, more than 7,000 new students start a degree programme at Aarhus University. Here, they encounter courses and activities that develop and challenge their mastery of every aspect of their chosen fields across disciplinary and national boundaries. The university offers over 200 degree programmes and 4,000 courses that meet the highest international standard. Over half of the university's Master's degree programmes are offered in English.

THE UNIVERSITY'S GRADUATES ARE IN DEMAND ON THE LABOUR MARKET

In the university's own employment survey from 2014, 96 per cent of the respondents with Master's degrees and 98 per cent with PhDs reported finding a job within one year of completing their degree.

KNOWN FOR AN OPEN LEARNING AND STUDY ENVIRONMENT THAT ...

- is based on an informal and direct dialogue between the students and researchers
- promotes independent and critical thinking
- provides a unique opportunity to combine courses from different disciplines
- is rated very highly by students: 88 per cent report being satisfied with their degree programme
- paves the way for study abroad
- has close ties to the labour market and offers good opportunities for internships

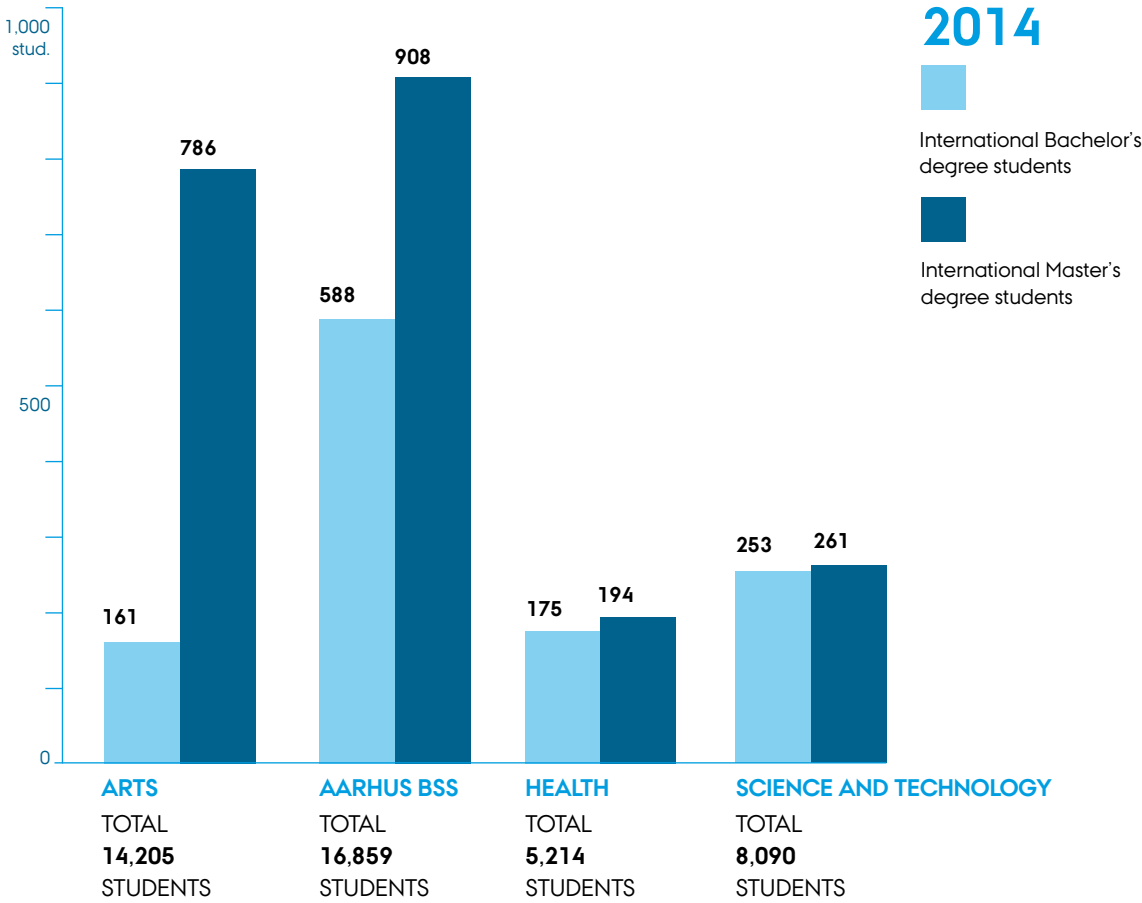


A LARGE PROPORTION ARE STUDENTS ON MASTER'S OR PHD LEVEL PROGRAMMES

STUDY ENVIRONMENTS WITHOUT BORDERS

Attracting the best international students is an important goal that contributes to the university's academic excellence. At the same time, the many exchange agreements with other universities give students from Aarhus University varied opportunities to travel abroad and acquire the competences they need to compete on a globalised labour market.

 [Go to the International Centre](#)



EXCHANGE AGREEMENTS

Aarhus University has exchange agreements with over 50 different countries and is involved in prestigious international university networks and alliances.

- Coimbra Group
- Nordic Center Fudan
- Nordic Center India
- SANORD
- University of the Arctic
- Utrecht Network
- World100 Reputation Network

INTERNATIONALLY STUDY ENVIRONMENT


- More than 60 degree programmes in English
- Over 3,300 international full-time students (approx. 1,200 at Bachelor's level and 2,100 at Master's degree level)
- Over 120 nationalities represented among full-time students
- Approx. 80 nationalities represented among academic staff

1,802

EXCHANGE STUDENTS ABROAD

1,026

EXCHANGE STUDENTS AT AARHUS UNIVERSITY



COLLABORATION PUTS KNOWLEDGE TO WORK

Through close relationships with industry and business, government, organisations and civil society, Aarhus University contributes to society's ability to innovate and adapt. This contribution is founded on the research the university brings into play in its interaction with the world – locally, nationally and globally.

A glimpse inside the global dairy cooperative Arla's Brabrand facility. Different faculties at Aarhus University work closely with Arla on recruitment, education and research – including a major joint project on the nutritional and health effects of dairy products. The university's relationship with Arla is one of many partnerships with Danish and international businesses of all sizes.



[!\[\]\(c8d96c8885d3000a912c2582004aed63_img.jpg\) Read more about the collaboration](#)

Photo: Lars Kruse

KNOWLEDGE CREATES DEVELOPMENT AND GROWTH

Concrete, innovative activities in collaboration with public and private businesses and organisations founded on research-based knowledge make Aarhus University an attractive partner that contributes to growth, development and sustainability. Here are just a few examples of such partnerships.



Click on the titles to go to the respective websites



Integrated psychiatric research

Aarhus University collaborates with the Lundbeck Foundation on the Initiative for Integrated Psychiatric Research (IPSYCH). The goal of the project is to identify the genetic and environmental factors involved in serious mental disorders such as schizophrenia, autism, ADHD and depression. Other partners in the project include the University of Copenhagen, Central Denmark Region, the Capital Region of Denmark and Statens Serum Institut.



Smart Cities

Aarhus University is an active participant in the Smart City network, which works to promote the development of Smart Cities in Denmark. The Smart City concept is about adapting and developing cities for the digital age. In 2015, the former Ministry of Housing, Urban and Rural Affairs established a think tank for Smart Cities chaired by Aarhus University.

25%

OF NEWLY ENROLLED PHD STUDENTS AT AARHUS UNIVERSITY DO A PHD PROJECT IN COLLABORATION WITH THE PRIVATE SECTOR (2014)



Diabetes research

A public-private partnership with Novo Nordisk A/S supports research on complications of diabetes and patient treatment. The goal of the partnership is to pave the way for improved therapies for patients.

AARHUS

European Capital of Culture 2017

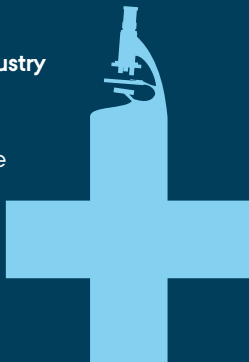
Aarhus University is involved in a partnership with Aarhus 2017 to produce a research-based analysis of the significance and effect of the European Capital of Culture status on cities, in relation to cultural life, image and identity as well as economic, social and political effects. The analysis will draw on existing research from previous European Capitals of Culture. Students as well as researchers are participating in the project.

Export companies

Researchers from Aarhus BSS (at the Tuborg Research Centre for Globalisation and Firms) have mapped the DNA of the most successful export companies together with the Danish Export Association. This research is aimed at helping the Danish export sector reach its full potential.

Single point of entry for industry

An initiative linking researchers at Department of Clinical Medicine and the pharmaceutical industry to promote more clinical trials in Central Denmark Region. The goal is to support medical progress for the benefit of patients.



Moesgaard Museum

There is a close partnership between the new Moesgaard Museum and Aarhus University that exploits the synergy between the museum's experts and the university's researchers and students. For example, students can submit assignments and projects in the form of concrete exhibitions they create in one of the museum's permanent exhibition spaces.



Hydrogeophysics

The HydroGeophysics Group is involved in partnerships with a large network of private companies and public institutions in Denmark and abroad. The group's research interests include groundwater investigation, mineral investigation, pollution control and other environmental problems. One result of the group's work is the spin-off company SkyTEM, a leading airborne geophysical survey company with activities all over the world.



Centre for Small and Medium-Sized Enterprises

In cooperation with

Nykredit and PwC, the Department of Law has established the Knowledge Forum for Small and Medium-sized Businesses (SMEs), where researchers at Aarhus University are exploring how to best strengthen growth and development in SMEs. SMEs are the backbone of the Danish economy, and the goal is to develop tools tailored to support their development.



Food research

In 2014, Arla commenced a five-year research collaboration with Aarhus University and University of Copenhagen. The goal is to investigate how dairy products can contribute to strengthening the immune system as well as preventing malnutrition and diseases such as type 2 diabetes.

RESEARCHERS ADVISE GOVERNMENT

Aarhus University researchers from a variety of fields advise government agencies and institutions. These consultancy activities help society find innovative solutions, particularly in relation to the environment, energy, food and agriculture, as well as health and education.

60.3 MILLION EUR

AMOUNT INVESTED BY GOVERNMENT AGENCIES IN RESEARCH-BASED CONSULTANCY FROM AARHUS UNIVERSITY IN 2014. EACH TIME THE PUBLIC SECTOR INVESTS ONE MILLION KRONER* IN CONSULTANCY, RESEARCHERS AT AARHUS UNIVERSITY ARE ABLE TO GENERATE AN ADDITIONAL ONE AND A HALF MILLION FROM EXTERNAL SOURCES.

*approx. EUR 134,000

W Click on the boxes to go to the respective websites

DANISH CENTRE FOR FOOD AND AGRICULTURE (DCA)

According to an agreement with the Ministry of Food, Agriculture and Fisheries of Denmark, DCA performs research-based consultancy for the ministry and relevant government agencies within agriculture, food and environment. Some consultancy is carried out in collaboration with researchers at Aarhus BSS. DCA advises the ministry on how to produce healthy, high-quality food, the demand for bio-based energy and materials and issues related to environment, nature and climate.

DANISH CENTRE FOR ENVIRONMENT AND ENERGY (DCE)

DCE provides research-based consultancy and expertise on nature, the environment and energy. Aarhus University's most important consultancy contracts are with the Danish Ministry of the Environment, the Danish Ministry of Climate, Energy and Building as well as the Environmental Agency for Mineral Resource Activities in Greenland. DCE's objective is to contribute to sustainable development both nationally and internationally.

DEPARTMENT OF FORENSIC MEDICINE

The Department of Forensic Medicine is located at Aarhus University Hospital and assists police districts throughout most of Jutland. The department's goal is to provide the criminal justice system with high-quality investigations, for which it has been internationally recognised.

CENTRE FOR HEALTHCARE COOPERATION*

The Centre for Healthcare Cooperation builds bridges between researchers at Aarhus University and society. The centre's goal is to become an indispensable advisor and partner in developing solutions to the healthcare and welfare challenges Denmark faces.

DANISH CENTRE FOR STUDIES IN RESEARCH AND RESEARCH POLICY

The centre, which is affiliated with the Department of Political Science, performs evaluations and analyses for Danish and international government agencies and institutions and organisations. The centre's objective is to provide society with the foundation for informed decision-making and innovation solutions, particularly with regard to the environment, energy, food and agriculture, as well as healthcare, education and research policy.

INTERNATIONAL ASSOCIATION FOR THE EVALUATION OF EDUCATIONAL ACHIEVEMENT (IEA)*

The Danish School of Education (DPU) is a member of the International Association for the Evaluation of Educational Achievement (IEA). Under the auspices of the IEA, participating researchers from Aarhus University participate in designing and carrying out evaluations of education throughout the world. The aim is to ensure the best possible school education.

*This initiative is not included in the EUR 60 million highlighted on p. 26.

LIFELONG LEARNING UPLIFTS SOCIETY

As a key bearer of knowledge and culture, Aarhus University helps lift general levels of education and competences in society. To a high degree, this is a matter of strengthening collaboration with citizens, associations and organisations.

4,500

STUDENTS ARE ENROLLED IN THE UNIVERSITY'S
APPROX. 50 CONTINUING AND FURTHER EDUCATION PROGRAMMES

2015

Sten Scheibye

Chair of Novo A/S, the Novo Nordisk
Foundation and other boards
PhD in organic chemistry, 1981

2014

Jørgen Vig Knudstorp

CEO of LEGO 2014
PhD in economics, 1998

2013

Jens Erik Sørensen

Former director of Aarhus Art Museum ARoS
MA in art history, 1979

2012

Birgit Storgaard Madsen

Former ambassador
MA in anthropology, 1969

2011

Lene Vestergaard Hau

Professor of physics at Harvard University
PhD in physics, 1991

2010

Nils Smedegaard Andersen

Partner and CEO, A.P. Møller-Mærsk
MSc in Economics, 1982

2009

Anders Fogh Rasmussen

Former prime minister and secretary general of NATO
MSc in economics, 1978

2008

HRH Crown Prince Frederik of Denmark

MSc in political science, 1995



Read more about distinguished alumni

STUDENT ONCE – ALUM FOR LIFE

The end of your studies doesn't have to mean the end of your relationship with Aarhus University. The alumni network gives alums opportunities for lifelong learning, inspiration and meaningful career networks. Since 2008, Aarhus University has named a distinguished alumnus each year: a former student who has made a particularly significant contribution to society.

THE DANISH UNIVERSITY EXTENSION IS FOR EVERYONE

Each year, the Danish University Extension offers the public over 900 lectures, events and festivals featuring the latest knowledge from the research world. The Danish University Extension works closely with Aarhus University and has over 65,000 course participants annually in Aarhus, Herning and Emdrup (Copenhagen).

AARHUS UNIVERSITY PRESS

publishes about 60 new books each year and has almost 2,000 titles in its catalogue. Aarhus University Press successfully reaches the general public with free e-books and a popular book series called 'Tænkepauser' (reflections) introducing a non-academic audience to the latest research.



Aarhus University Press

VISIT THE UNIVERSITY'S MUSEUMS

- **Museum of Ancient Art** – collection of Mediterranean antiquities, Aarhus
- **Botanical Gardens and Greenhouses** – collections of plants from different ecozones, Aarhus
- **Ole Rømer Observatory** – public access to large telescopes, Aarhus
- **Orion Planetarium** – planetarium, observatory and exhibits, Jels
- **Steno Museum** – planetarium, exhibits and more, Aarhus



Click on the museums to go to their respective websites



Dream Team is an honours programme for medical students with the ambition to become surgeons. The most promising talents are identified early in their studies and are introduced to the surgical specialisation through practical experience in the operating room. Special honours and talent programmes to meet the needs of high-achieving students are a high priority across the university.



RESEARCH TALENTS UNFOLD

Through targeted talent development, Aarhus University makes a focused effort to attract and stimulate the most motivated, talented students. Many junior researchers from Aarhus University have distinguished themselves both nationally and internationally.


 [Read more about talent development](#)

Photo: Lars Kruse

ROOM TO DEVELOP UNIQUE TALENTS

Talented students are the rising research stars of tomorrow. The university offers special honours programmes starting at Bachelor's degree level, and students on some programmes can be directly admitted to a combined Master's/PhD programme after the Bachelor's programme.

The keywords describing PhD programmes are academic excellence, high personal motivation and close collaboration with experienced researchers.

INTERNATIONALLY COMPETITIVE PHD PROGRAMMES

The graduate schools at all four faculties received high scores in an international evaluation from 2015.

- The programmes are internationally recognised
- Graduates have excellence career options
- PhD students publish in prestigious international journals

1,800

PHD STUDENTS IN 2014

TEN YEARS AGO, THERE WERE APPROX. 1,000

450

NEW PHD STUDENTS IN 2014

28%

OF PHD STUDENTS AT AARHUS UNIVERSITY ARE INTERNATIONAL

RESEARCH TALENT AWARDS IN 2014

Each year, the Ministry of Science, Technology and Innovation awards a DKK 1.2 million (approx. EUR 160,800) Elite Researcher Prize to outstanding researchers under the age of 45.

- Professor Daniel Otzen, iNANO and Department of Molecular Biology and Genetics
- Professor Jens-Christian Svenning, Department of Bioscience



Read more about our EliteForsk prize winners

AIAS: SUPPORTING THE BRIGHTEST TALENTS

AIAS is an IAS (Institute for Advanced Study) at Aarhus University with the aim of promoting research of the highest quality with a focus on independent basic research and talent development within all core disciplines. AIAS selects its fellows purely on the basis of their qualifications in an open competition and recruits talents of the highest international standard – from abroad and from Aarhus University.

At AIAS, fellows are able to immerse themselves in their research projects for long or short periods of time with the aim of producing outstanding research results. The institute's research activities are integrated into the research environments at the university's departments and schools.

AIAS was established in 2013 and is the first institute of its kind in Denmark. Despite its young age, AIAS has already become part of networks comprising the most prestigious IAS units, NetIAS and UBIAS, with e.g. WiKo (Wissenschaftskolleg zu Berlin), CRASSH (Cambridge University) and SCAS (Uppsala).



27

junior fellows

8

senior fellows

15

different
nationalities



AIAS




The outdoor amphitheatre in the University Park is a central meeting place and landmark for students from all disciplines and of all nationalities.



ONE UNIVERSITY – MANY LOCATIONS

Aarhus University has its natural centre in Aarhus, but the university has locations all over Denmark, with research activities in numerous cities and campuses in Emdrup and Herning in addition to Aarhus. The common denominator is a high standard of academic excellence and vibrant campus life with strong traditions.

AARHUS UNIVERSITY'S LOCATIONS

 Click on each location to go to its respective websites

RESEARCH AND EDUCATION

Aarhus: The main campus for Aarhus University and the four faculties (Arts, Aarhus BSS, Health, and Science and Technology), approx. 5,900 employees and 34,500 students*

Emdrup (Copenhagen): Danish School of Education (DPU), approx. 350 employees and 1,500 students*

Herning: Department of Business Development and Technology, approx. 100 employees and 1,200 students*

RESEARCH ACTIVITIES

Flakkebjerg: Department of Agroecology and Department of Molecular Biology and Genetics, approx. 150 employees

Kalø/Rønde: Department of Bioscience, approx. 40 employees

Roskilde: Department of Bioscience, Department of Environmental Science, Department of Geoscience, approx. 250 employees

Silkeborg: Department of Bioscience, approx. 150 employees

Viborg/Foulum: Food and agriculture research, approx. 570 employees

Årlev: Department of Food Science, approx. 70 employees

OTHER LOCATIONS

Askov: Experimental station

Horsens: Bygholm, Department of Engineering

Jels: Orion Planetarium

Jyndevad: Experimental station

Nuuk: Arctic Research Centre (ARC)

Rønbjerg: Marine biology field station

Tenerife: SONG telescope

Villum Research Station: Experimental station in northern Greenland

Zackenborg: Experimental station in north-east Greenland

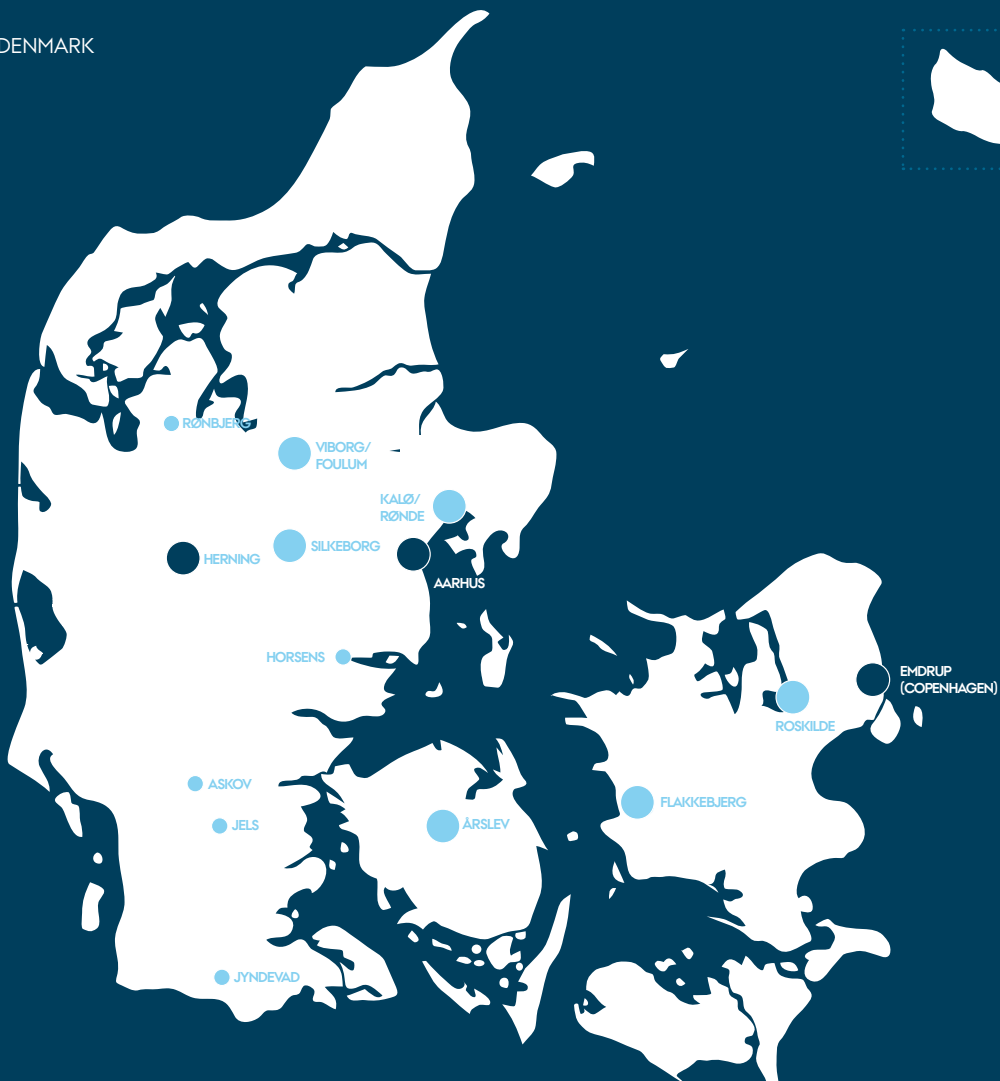
*Full-time students excluding students on continuing and further education programmes and PhD students.

WHERE

Aarhus University has campuses in three cities in Denmark and research activities at 18 different locations in Denmark, Greenland and on Tenerife.



DENMARK



0 60 120 KM

CAMPUSES IN THREE CITIES

AARHUS

The Aarhus campus locations are spread out over much of the city, with the University Park and its yellow-brick buildings as the historical core where many of the year's traditional events take place, such as the annual Regatta, the annual celebration and various award ceremonies. All four faculties are represented in the University Park, but the university also has significant activities on Fuglsangs Allé (business), on the waterfront at the Navitas building (engineering), at Moesgaard Manor (anthropology and archaeology), and in the neighbourhoods of Trøjborg (education), Frederiksbjerg (sport science) and Katrinebjerg (IT and engineering).



34,500
students*

The distinctive university buildings in Aarhus were designed by the Danish architect C.F. Møller (1898-1988).

The restrained, functionalist aesthetic of the yellow-brick campus with its clean lines has been recognised internationally as an architectural masterpiece. The buildings and park are included in the Denmark's Cultural Canon as one of the top 12 architectural masterpieces in Denmark. Over 28 million bricks were used in its construction.

*Full-time students excluding students on continuing and further education programmes and PhD students.

All photos were taken by photographers at Aarhus University.



AARHUS: A YOUNG, DYNAMIC CITY

GEOGRAPHY AND POPULATION

- Denmark's second-largest city
- Located on the Jutland peninsula on the coast next to forests and countryside
- 320,000 inhabitants and 1.2 million people in the greater Aarhus metropolitan area
- Well-developed infrastructure for public transportation, cycling and private vehicles
- Average age of inhabitants approx. 37 years, among the lowest in Denmark as a whole
- The highest concentration of students in Denmark

LOCAL AND INTERNATIONAL

- Known for its informal and hospitable atmosphere
- Good conditions for international employees and their families
- International kindergarten, school and upper secondary school
- International Community, an organisation that provides practical help in relation to housing, jobs, leisure activities, social networks and lots more

A THRIVING BUSINESS SECTOR

- Home to nearly 40,000 companies
- Strengths within several sectors, in particular ICT, cleantech, health, food, architecture, design and fashion
- Good opportunities for collaboration involving business, education, research, public administration and other partners
- Large companies with offices, development divisions or headquarters in Aarhus include Dupont, Google, IBM, CSC, Bestseller, Arla, Vestas, JYSK, Terma and Jyllands-Posten
- The Port of Aarhus is Denmark's largest container port and in the top 100 world-wide

A RICH CULTURAL LIFE

- Aarhus has been named European Capital of Culture 2017
- World-class museums (ARoS Art Museum, Moesgaard Museum and Den Gamle By ('the Old Town'))
- The largest cultural center in Scandinavia, the Concert Hall Aarhus
- Location of HRM Queen Margrethe's summer residence Marselisborg Castle
- From Michelin restaurants to casual cafés
- Concerts, theatre, dance and festivals all year round
- Lots of recreational areas

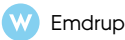
EMDRUP

The Emdrup campus in north-western Copenhagen is the location of the majority of the Danish School of Education's activities. Good campus facilities combined with a shared academic focus across degree programmes makes Emdrup a closely knit academic community. AU Library, Campus Emdrup is located at the Emdrup campus and has a collection of about 800,000 books and journals.



2,500
students*

A new research and teaching facility for biology and environmental science is being constructed on the Emdrup campus (completion 2021)



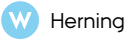
HERNING

The campus features new, modern buildings designed by architect Henning Larsen. Here, the focus is on engineering, business administration and management in a study environment with students from many different countries. Campus Herning has a strong tradition of collaboration with business and industry and has an award-winning entrepreneurial environment.



1,200
students*

Together with Aarhus University's department in Herning, Stanford University has established a Stanford Peace Innovation Lab in Herning, which provides opportunities for collaboration between researchers from Stanford and businesses, students and researchers in Denmark .



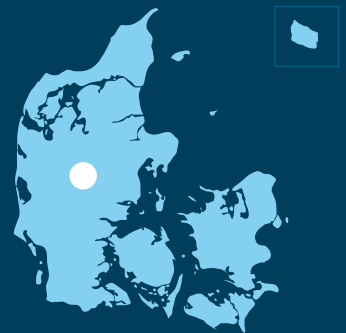
*Full-time students excluding students on continuing and further education programmes and PhD students.

All photos were taken by photographers at Aarhus University.



AARHUS UNIVERSITY IN THE CAPITAL

- Emdrup is located in north-west Copenhagen, which is Denmark's capital city.
- Copenhagen has more than 1.2 million inhabitants
- The city is located on the island Zealand and is nation's cultural, political and economic centre
- An important transport hub with the largest airport in Scandinavia, the largest train station in Denmark and one of its largest ports
- Location of major cultural institutions such as Denmark's National Stadium, the National Museum of Denmark and the Royal Danish Opera.
- There are good public transport connections between Emdrup and downtown Copenhagen



HERNING: A GROWING CITY

- Around 48,000 inhabitants
- Located approx. 80 km from Aarhus in western Jutland
- Hosts many events and conventions and is home to many successful businesses
- Location of Denmark's only multi-purpose arena (15,000 seats)
- Future location of one of Central Denmark Region's two new mega-hospitals (the other is under construction in Aarhus)

A high-angle photograph of a massive crowd of students gathered on a grassy bank next to a lake. The crowd is dense and colorful, with many people holding flags and banners. A small boat is visible in the water in the lower right corner. The text "NORTHERN EUROPE'S LARGEST STUDENT EVENT" is overlaid in large white letters on the left side of the image.

NORTHERN EUROPE'S LARGEST STUDENT EVENT

The Regatta

Each year, students at Aarhus University organise the legendary regatta which is today Northern Europe's largest student event, attracting more than 20,000 students.

The regatta combines a 'race' across the lake in inflatable kayaks with beer relay races. It was held for the first time in 1991 as a competition between medical students and dentistry students, and has since



Photo: Anders Trærup

become a battle between many different degree programmes. The prize is honour and the trophy 'the Golden Bedpan'.

The event is rich in traditions, including inventive and often bizarre pageantry from the teams, which over the years has included everything from elephants and helicopters to divers and dromedaries.

[!\[\]\(c3d993ca47bfe2a953c700506ce31fa0_img.jpg\) Read more about the Regatta and watch videos from the event](#)

Photo: Lars Holst Hansen



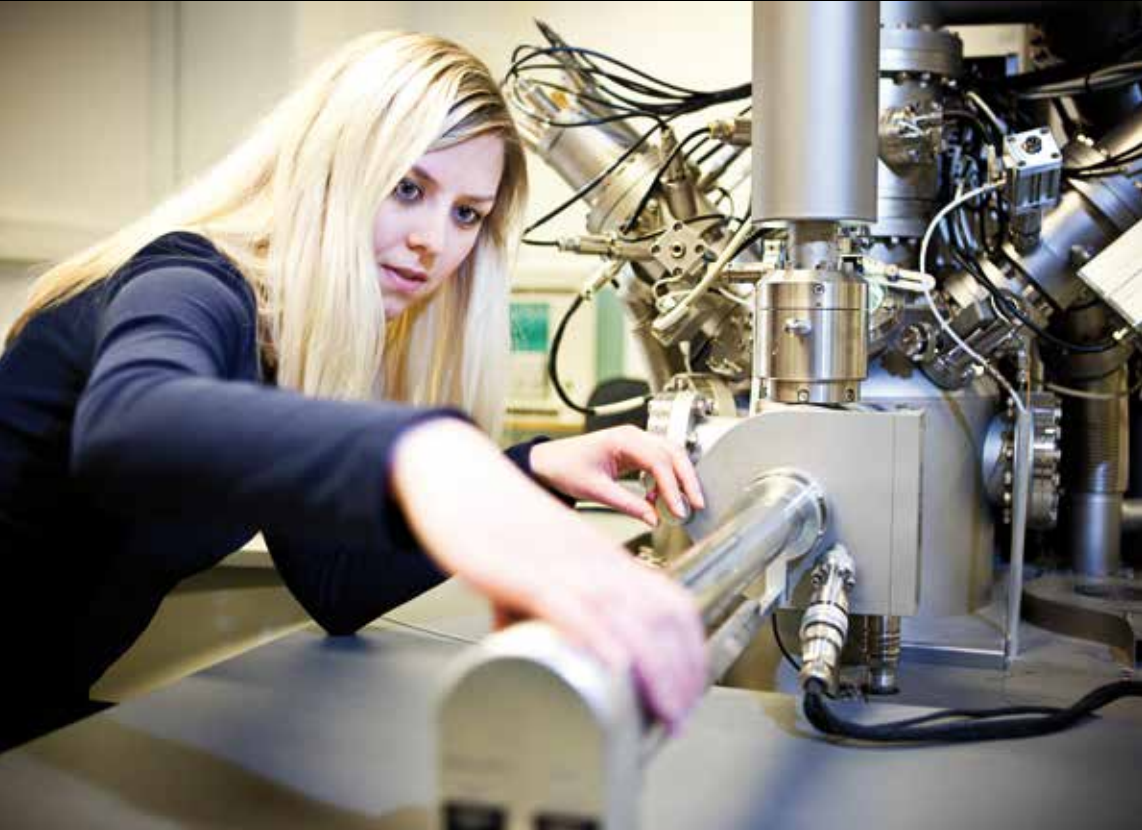
Aarhus University is a vibrant university that prioritises both breadth and depth in research and education.

All photos were taken by photographers at Aarhus University, unless otherwise stated.











Read more on **au.dk/en**
or follow Aarhus University
on Facebook, Twitter and LinkedIn

PROFILE 2015 2016

Editor

Camilla Schrøder, Rector's Office

Design and layout

Astrid Friis Reitzel, Events and Communication Support

Photos

Lars Kruse, Jesper Rais, Anders Trærup or Maria Randima Sørensen,
Events and Communication Support, unless otherwise stated

Proofreading and translation

Lenore Messick, Events and Communication Support

Printing

vahle+ nikolaisen

Print run UK

3,500 copies

ISBN 978-87-92829-24-5

ISSN 2246-5995

This publication was printed with vegetable ink on Munken Polar paper and at a Nordic Council Swan Ecolabel-approved printing office. The paper is derived from FSC®-approved sustainable forestry and other controlled sources.



Aarhus University
Nordre Ringgade 1
8000 Aarhus C
Denmark

TEL. +45 8715 0000
E-MAIL: au@au.dk
WEB: www.au.dk/en