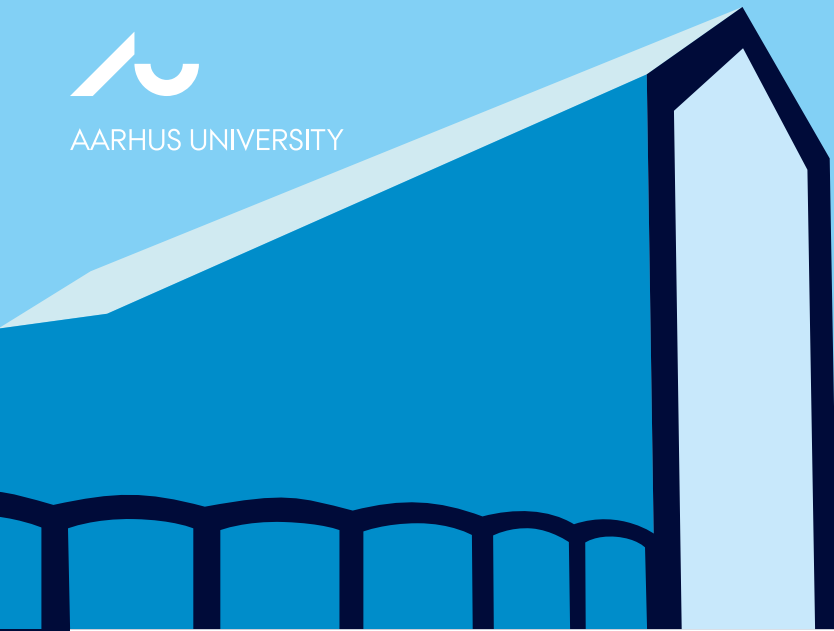




AARHUS UNIVERSITY



IN BRIEF  $\frac{2016}{2017}$





---

**Solidum petit in profundis**

We seek solid ground in the depths

---

## A STRONG COMMITMENT TO **EXCELLENCE**

Aarhus University stands for quality and the continued pursuit of excellence in research and research-based education. Knowledge exchange, talent development and collaboration with society are high priorities.

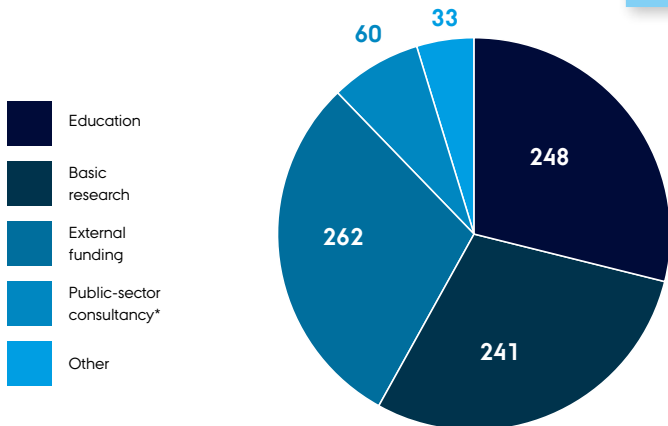
Established in 1928 on the initiative of local citizens, the university is a relatively young institution. Today Aarhus University is a globally oriented, academically diverse and research-intensive university with four faculties: Arts, Aarhus BSS, Health and Science and Technology.

All figures in this publication are for 2015 unless otherwise stated.  
The number of employees is stated in FTEs (Full-Time Equivalents).

### FOUR CORE ACTIVITIES

Research  
Education  
Collaboration  
Talent Development

## A SOLID FINANCIAL FOUNDATION



The total revenue for research in 2015 amounted to EUR 430 million. External funding accounts for around 30 per cent of total revenue.

REVENUE million EUR  
Total: 844

\* Including sector-related research and forensic medicine but excluding special agreements with the Ministry of the Environment and Food.

**42,000**

BACHELOR'S, MASTER'S, PHD AND PART-TIME STUDENTS

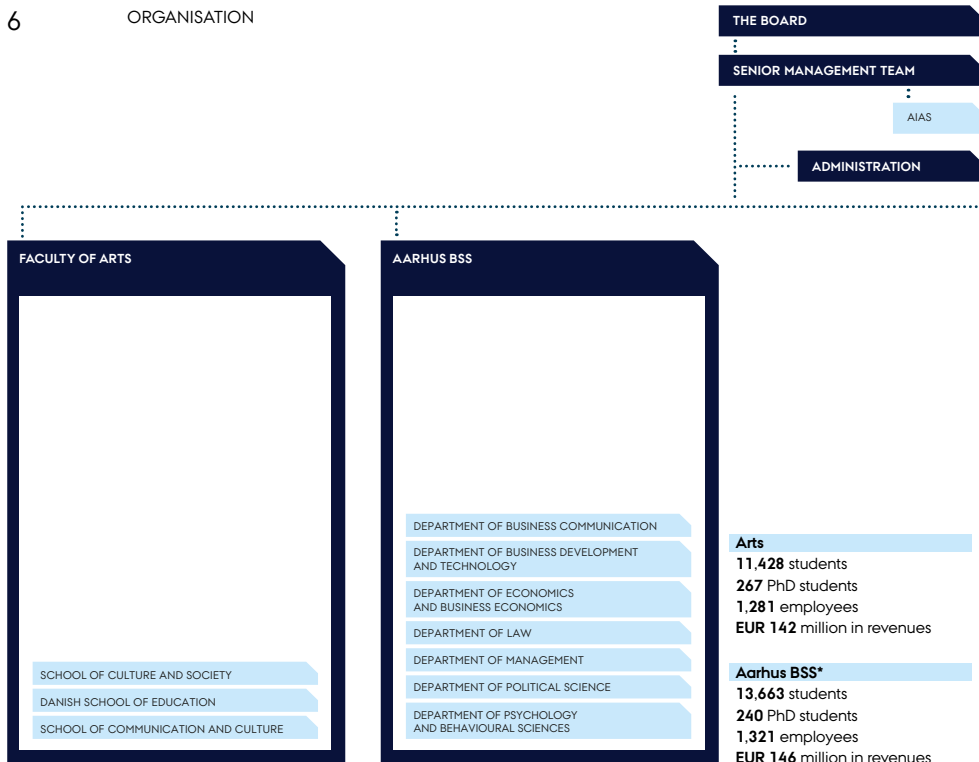
**8,000**

EMPLOYEES

**EUR 844 MILLION**

IN REVENUE

---



\* School of Business and Social Sciences

AARHUS  
UNIVERSITY HOSPITAL

#### FACULTY OF HEALTH

DEPARTMENT OF BIOMEDICINE

DEPARTMENT OF PUBLIC HEALTH

DEPARTMENT OF CLINICAL MEDICINE

DEPARTMENT OF DENTISTRY AND ORAL HEALTH

DEPARTMENT OF FORENSIC MEDICINE

#### Health

**4,330** students  
**665** PhD students  
**1,532** employees  
**EUR 175** million in revenues

#### Science and Technology

**7,096** students  
**673** PhD students  
**2,949** employees  
**EUR 356** million in revenues

#### FACULTY OF SCIENCE AND TECHNOLOGY

DEPARTMENT OF AGROECOLOGY

DEPARTMENT OF BIOSCIENCE

DEPARTMENT OF COMPUTER SCIENCE

DEPARTMENT OF PHYSICS AND ASTRONOMY

DEPARTMENT OF FOOD SCIENCE

DEPARTMENT OF GEOSCIENCE

DEPARTMENT OF ANIMAL SCIENCE

DEPARTMENT OF ENGINEERING

DEPARTMENT OF CHEMISTRY

DEPARTMENT OF MATHEMATICS

DEPARTMENT OF ENVIRONMENTAL SCIENCE

DEPARTMENT OF MOLECULAR BIOLOGY AND GENETICS

AARHUS UNIVERSITY SCHOOL OF ENGINEERING

INANO

DANISH CENTRE FOR FOOD AND AGRICULTURE (DCA)

DANISH CENTRE FOR ENVIRONMENT AND ENERGY (DCE)

## A **RESEARCH-INTENSIVE** UNIVERSITY

Aarhus University ranks among the top 100 universities in the world on several of the most important international ranking lists, out of over 17,000 universities worldwide.

### **NOBEL PRIZES**

Nobel Prize in Chemistry (1997) to **Emeritus Professor, MD, DMSc Jens Christian Skou** for his work on the sodium-potassium pump.

Nobel Prize in Economics (2010) to **Professor Dale T. Mortensen**, Northwestern University and Aarhus University (now deceased), in recognition of his work on the labour market.

### **PUBLICATIONS/CITATIONS**

Scientific publications from researchers at Aarhus University have a 16 per cent higher citation rate than the world average (CWTS Leiden Ranking, 2016).



## THREE INTERNATIONAL ACCREDITATIONS AWARDED TO AARHUS BSS

Aarhus BSS – School of Business and Social Sciences holds the international accreditations AACSB and AMBA, in addition to EQUIS for Aarhus BBS' business programmes.

# 13

CENTRES OF EXCELLENCE

# 8

INTERDISCIPLINARY CENTRES

# 150

OTHER RESEARCH CENTRES

---

## STATE-OF-THE-ART RESEARCH FACILITIES

Aarhus University continually develops its physical research infrastructure to provide the right conditions for scientific breakthroughs. Aarhus University's research facilities are much in demand and are used by the university's own researchers as well as partners in Denmark and abroad.



### Hyperpolarised MRI scanner

An advanced magnetic resonance scanner enhanced by hyperpolarisation which is used in medical imaging to diagnose and treat disease. This form of MRI is expected to lead to an increased understanding of – and better therapies for – some of the most common diseases in the Western world, such as cancer, diabetes, obesity and cardiovascular disease.

### Department of Clinical Epidemiology (KEA)

KEA offers researchers access to clinical databases and registries which contain data on all Danish patients, a resource which helps put AU's epidemiology research in the international elite.



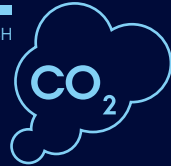
### DIGHUMLAB

Digital Humanities Laboratory works to promote digital resources and tools to humanities and social science researchers.



### Cognition and Behavior Lab

A laboratory with advanced facilities for evidence-based research in human behaviour and cognition, primarily within economics, political science, psychology, linguistics, marketing and management.



### The SONG telescope on Tenerife

The prototype of an ultra-modern robotic telescope for studying stars and planetary systems. The telescope is the first in the Danish-led telescope design and construction project SONG.

### Biogas and HTL plants

An advanced biogas plant and an HTL plant in the town of Foulum make it possible to perform groundbreaking research of decisive importance in relation to CO<sub>2</sub> reduction and energy supply.

### AURORA

Ultramodern flexible research vessel that serves as a floating laboratory for biologists, geologists, geophysicists and ocean researchers from other fields.



### Danish Center for Ultrahigh Field NMR Spectroscopy

The largest of the centre's NMR spectrometers generates a magnetic field 500.000 times stronger than Earth's and is used to analyse substances at the molecular level.



### Research stations in Greenland

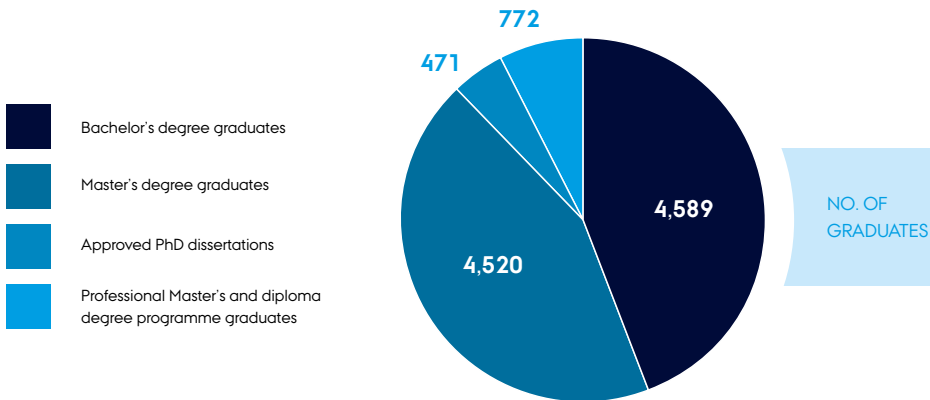
Aarhus University has two research stations in Greenland: Zackenberg Research Station in the north-east and Villum Research Station in the far north. Both are unique starting points for research into climate change in the High Arctic.



### Biobanks and Genome Sequencing

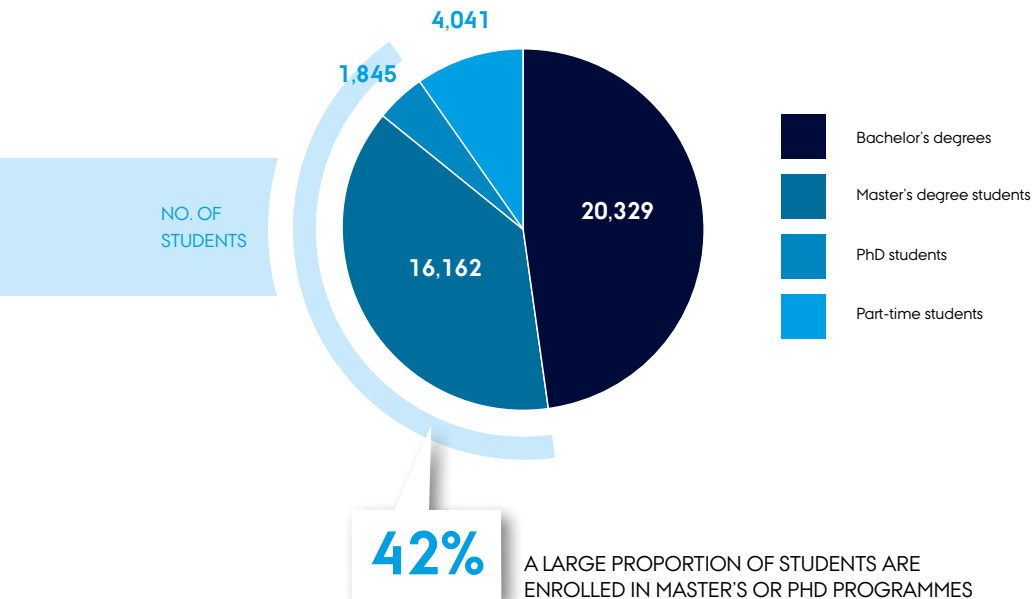
Using advanced sequencing technologies, a supercomputer can integrate and analyse large data sets from the unique Danish registry systems and biobanks combined with cell and animal models.

## GRADUATES ARE THE MOST IMPORTANT CONTRIBUTION TO SOCIETY

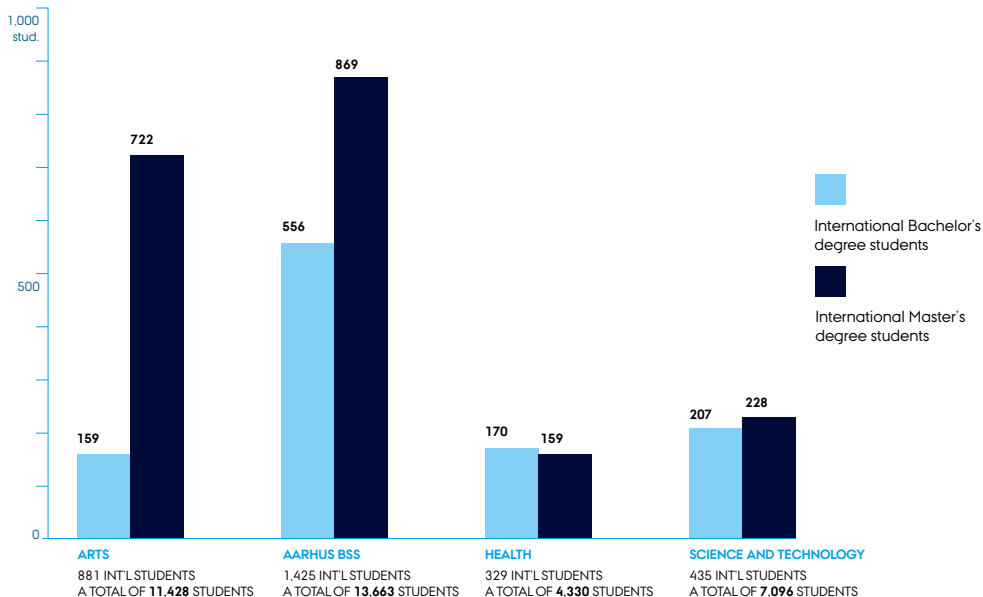


Each year, more than 7,000 new students start a degree programme at Aarhus University. Here, they encounter courses and activities that develop and challenge their mastery of every aspect of their chosen fields across disciplinary and national

boundaries. The university offers over 200 degree programmes and 4,000 courses that meet the highest international standard. Over half of the university's Master's degree programmes are offered in English.



## AN INTERNATIONAL STUDY ENVIRONMENT



- More than 60 degree programmes in English
- Over 3,000 international full-time students (approx. 1,000 at Bachelor's level and 2,000 at Master's degree level)
- Over 120 nationalities represented among full-time students
- Approx. 80 nationalities represented among academic staff

# 1,300

EXCHANGE STUDENTS ABROAD. IN ADDITION APPROX. 350 STUDENTS  
ARRANGE STAYS ABROAD FINANCED BY OVERSEAS SCHOLARSHIPS  
FROM THE GOVERNMENT

# 1,000

EXCHANGE STUDENTS AT AARHUS UNIVERSITY

---

## COLLABORATION PUTS **KNOWLEDGE TO WORK**

Through close relationships with industry and business, government, organisations and civil society, Aarhus University contributes to society's ability to innovate and adapt.

Aarhus University is involved in a great number of partnerships with public and private businesses as well as organisations. In addition, researchers from

a variety of fields advise government agencies and institutions, particularly in relation to the environment, energy, food and agriculture, as well as health and education. Each time the public sector invests one million kroner\* in consultancy, researchers at Aarhus University are able to generate an additional one and a half million\* from external sources.

\*approx. EUR 134,500 and EUR 202,000



# 20%

OF NEWLY ENROLLED PHD STUDENTS AT AARHUS UNIVERSITY DO A PHD PROJECT IN COLLABORATION WITH THE PRIVATE SECTOR

# EUR 60 MILLION

AMOUNT INVESTED BY GOVERNMENT AGENCIES IN RESEARCH-BASED CONSULTANCY FROM AARHUS UNIVERSITY IN 2015

# 440

NEW RESEARCH PARTNERSHIPS WITH PRIVATE BUSINESSES IN 2015

## ROOM TO DEVELOP TALENTS

### PHD DEGREE PROGRAMMES AT AARHUS UNIVERSITY

- The programmes are internationally recognised
- Graduates have excellent career options
- PhD students publish in prestigious international journals\*

### TALENT DEVELOPMENT – THE AARHUS MODEL

With a special honors programme, Aarhus University is now offering the most motivated students the opportunity to challenge themselves even more. The model has been trialled at Science and Technology, and the aim is to develop and expand it to the entire university.

### SUPPORTING THE BRIGHTEST TALENTS

AIAS – Aarhus Institute of Advanced Studies – aims to promote research of the highest quality with a focus on independent basic research and talent development within all core disciplines. AIAS selects its fellows purely on the basis of their qualifications in an open competition and recruits talents of the highest international standard – from abroad and from Aarhus University.

**27**

junior fellows

**7**

senior fellows

**17**

different nationalities

\* Source: an international evaluation of PhD programmes at all four faculties in 2015.

**1,800**

PHD STUDENTS

**530**

NEW PHD STUDENTS

**28%**

OF PHD STUDENTS AT AARHUS UNIVERSITY ARE INTERNATIONAL

---

### RESEARCH AND EDUCATION

**Aarhus:** The main campus for Aarhus University and the four faculties (Arts, Aarhus BSS, Health, and Science and Technology)

**Emdrup (Copenhagen):** Danish School of Education (DPU)

**Herning:** Department of Business Development and Technology

### RESEARCH ACTIVITIES

**Flakkebjerg:** Department of Agroecology and Department of Molecular Biology and Genetics

**Kalø/Rønde:** Department of Bioscience

**Roskilde:** Department of Bioscience, Department of Environmental Science, Department of Geoscience

**Silkeborg:** Department of Bioscience

**Viborg/Foulum:** Food and agriculture research

**Årslev:** Department of Food Science

### OTHER LOCATIONS

**Askov:** Experimental station

**Horsens:** Bygholm, Department of Engineering

**Jels:** Orion Planetarium

**Jyndevad:** Experimental station

**Nuuk:** Arctic Research Centre (ARC)

**Rønbjerg:** Marine biology field station

**Tenerife:** SONG telescope

**Villum Research Station:** Experimental station in northern Greenland

**Zackenbergl:** Experimental station in north-east Greenland



## MISSION

Aarhus University is an academically diverse and strongly research-oriented institution which creates and shares knowledge.

## VISION

Aarhus University strives to be a leading globally-oriented university with a strong engagement in the development of society.

## VALUES

The university defends the research freedom of individuals and desires to maintain and develop a culture which promotes collaboration, critical dialogue, curiosity and the independent search for new knowledge and insight.

---

---

Read more on [au.dk/en](https://au.dk/en)  
or follow Aarhus University on



A stylized architectural graphic featuring a series of dark blue arches supported by vertical pillars, set against a light blue background. A white ribbon-like shape curves across the top of the arches.

Aarhus University  
Nordre Ringgade 1  
DK-8000 Aarhus C  
Denmark

+45 8715 0000  
au@au.dk  
au.dk/en