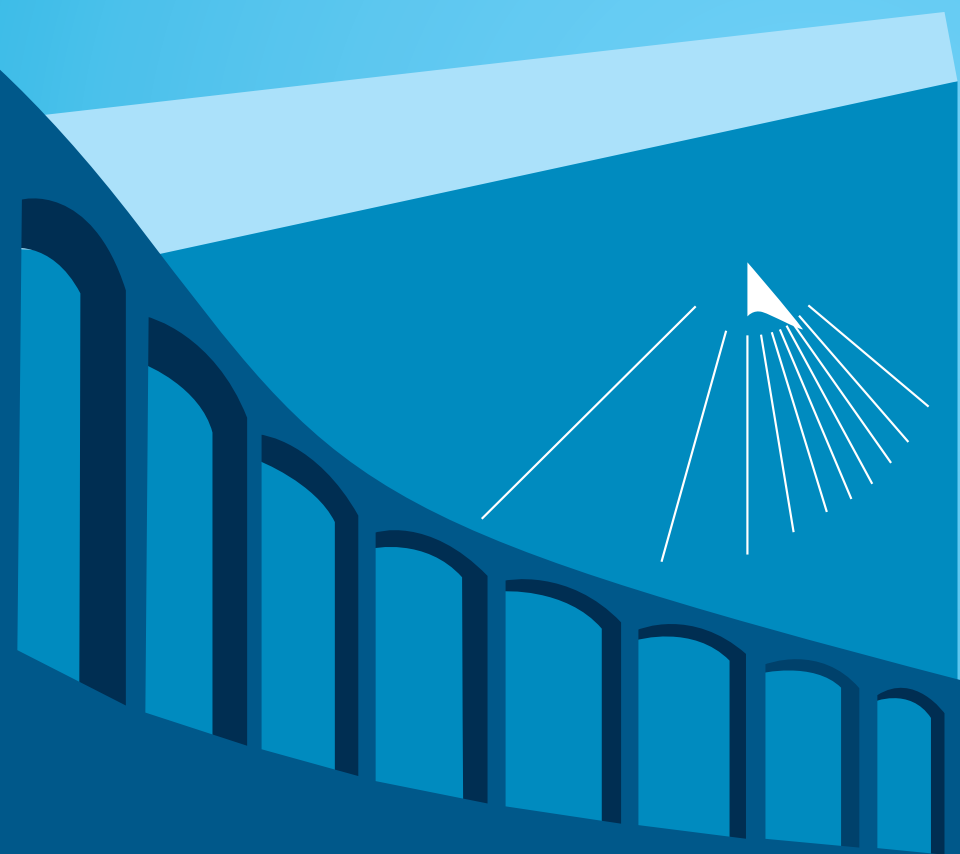

PROFILE $\frac{2017}{2018}$



AARHUS UNIVERSITY





Solidum petit in profundis
We seek solid ground in the depths

CONTENTS

MEET AARHUS UNIVERSITY

Knowledge which benefits society	4
A strong foundation	6
Deep insight, wide horizons	8

RESEARCH

Excellent research creates breakthroughs	10
A research-intensive university	12
State-of-the-art research facilities – examples	14
Room to develop unique talents	16

EDUCATION

Graduates are our most important contribution to society	18
Academic excellence + a good study environment = attractive degree programmes	20
A study environment without borders	22

COLLABORATION

Collaboration puts knowledge to work	24
Knowledge creates development and growth	26
Researchers advise government	28
Lifelong learning uplifts society	30

CAMPUS

One university – many locations	34
Aarhus University's locations	36
Campuses in three cities	38

AARHUS UNIVERSITY IN PICTURES

	44
--	----

ABOUT THE PROFILE BROCHURE

This year's profile brochure is an updated and lightly edited version of the 2016-17 profile brochure.

All figures are based on 2016 unless otherwise indicated.

The number of employees is expressed in FTEs.



KNOWLEDGE WHICH BENEFITS SOCIETY

Aarhus University stands for quality and the continued pursuit of excellence in research and research-based education. Knowledge exchange, talent development and collaboration with society are high priorities.

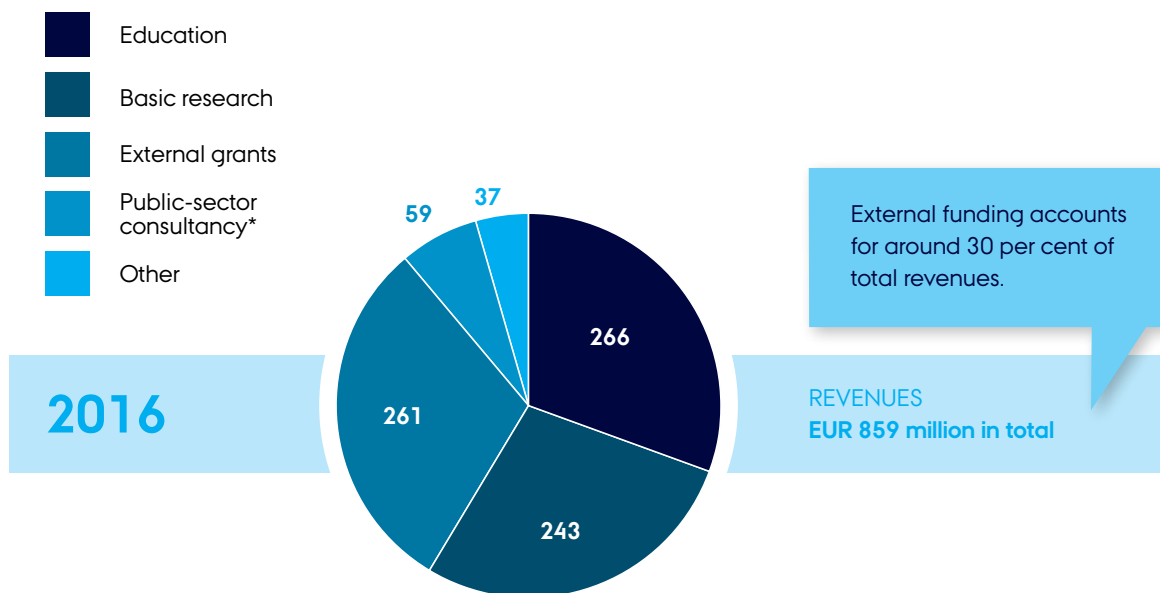
The Main Hall, which towers over the University Park, is a central part of Aarhus University. The distinctive university buildings in Aarhus were designed by the Danish architect C.F. Møller (1898-1988).



The restrained, functionalist aesthetic of the yellow-brick campus with its clean lines has been recognised internationally as an architectural masterpiece. The buildings and park are included in the Denmark's Cultural Canon as one of the top 12 architectural masterpieces in Denmark.

A STRONG FOUNDATION

Aarhus University is a globally oriented, academically diverse and research-intensive university with four faculties: Arts, Aarhus BSS, Health, and Science and Technology. Established in 1928 as a private initiative, today the university has a solid platform and strong impact, both in Denmark and internationally, thanks to its size and the research results it delivers. The university has high ambitions for the future, with a continued focus on excellence in education and research.



* Including sector-related research and forensic medicine but not special contracts with the Ministry of Environment and Food of Denmark.

MISSION

Aarhus University is an academically diverse and strongly research-oriented institution that creates and shares knowledge.

VISION

Aarhus University strives to be a leading globally-oriented university with a strong engagement in the development of society.

VALUES

The university defends the research freedom of individuals and desires to maintain and develop a culture that promotes collaboration, critical dialogue, curiosity and the independent search for new knowledge and insight.

40,000

BACHELOR'S, MASTER'S, PHD AND PART-TIME STUDENTS

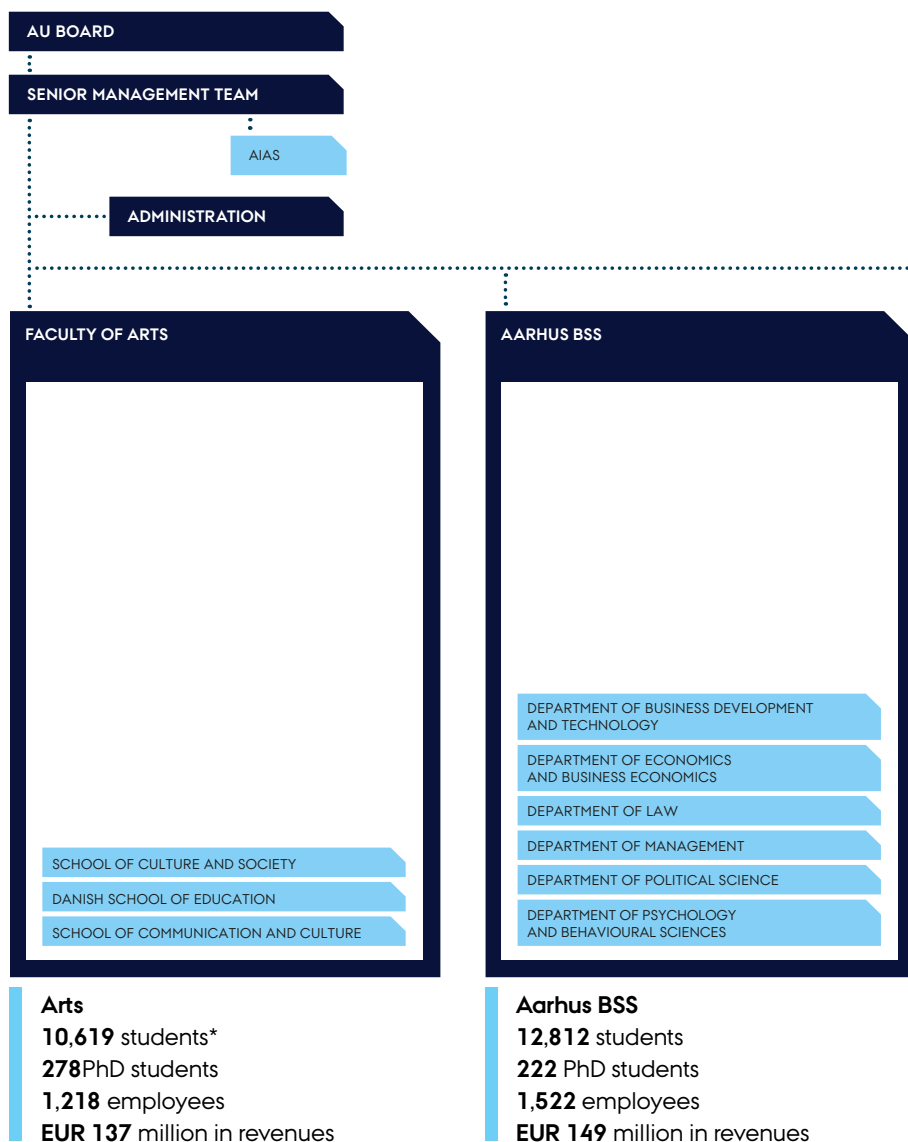
8,000

EMPLOYEES

EUR 859 MILLION

IN REVENUES

DEEP INSIGHT, WIDE HORIZONS



THREE CORE ACTIVITIES

- Research
- Education
- Collaboration

With its four faculties, Aarhus University spans the entire research spectrum. And through its activities, the university reaches out to all sectors of society. The university combines an emphasis on depth of expertise within individual fields of inquiry with cross-disciplinary collaboration in research, education, talent development and partnerships with private and public businesses and institutions.

In addition to 34,500 Bachelor's and Master's degree students, there are 4,000 students across the university on further and continuing education programmes.

AARHUS
UNIVERSITY HOSPITAL

FACULTY OF HEALTH

DEPARTMENT OF BIOMEDICINE
DEPARTMENT OF PUBLIC HEALTH
DEPARTMENT OF CLINICAL MEDICINE
DEPARTMENT OF DENTISTRY AND ORAL HEALTH
DEPARTMENT OF FORENSIC MEDICINE

Health
4,325 students
656 PhD students
1,360 employees
EUR 174 million in revenues

FACULTY OF SCIENCE AND TECHNOLOGY

DEPARTMENT OF AGROECOLOGY
DEPARTMENT OF BIOSCIENCE
DEPARTMENT OF COMPUTER SCIENCE
DEPARTMENT OF PHYSICS AND ASTRONOMY
DEPARTMENT OF FOOD SCIENCE
DEPARTMENT OF GEOSCIENCE
DEPARTMENT OF ANIMAL SCIENCE
DEPARTMENT OF ENGINEERING
DEPARTMENT OF CHEMISTRY
DEPARTMENT OF MATHEMATICS
DEPARTMENT OF ENVIRONMENTAL SCIENCE
DEPARTMENT OF MOLECULAR BIOLOGY AND GENETICS
AARHUS UNIVERSITY SCHOOL OF ENGINEERING
INANO
DCA - DANISH CENTRE FOR FOOD AND AGRICULTURE
DCE - DANISH CENTRE FOR ENVIRONMENT AND ENERGY

Science and Technology
6,713 students
625 PhD students
2,957 employees
EUR 360 million in revenues



A research group from Aarhus University is behind a computer game which has produced utterly unique information which can contribute to quantum physics research. The players are ordinary people, children and adults, and the object of the game is to move an atom from one place to another in the best possible way. The ultimate goal of the project is to contribute to the development of the quantum computer. The project has won numerous awards and international

EXCELLENT RESEARCH CREATES BREAKTHROUGHS

Aarhus University generates and shares knowledge that contributes to solving complex social and global challenges. Increasingly, the university's activities cross boundaries – national, sectoral and disciplinary – which helps bring research breakthroughs to new levels of achievement.

grants, and is an example of the kind of research which breaks down borders – between fields, between methods, and in the results which are produced. The project is just one of many examples of the exciting research being performed at Aarhus University.

IN THE TOP 100

Aarhus University is number 65 on Shanghai Ranking's Academic Ranking of World Universities (ARWU), which ranks the best 500 universities in the world. Aarhus University is in the top 100 on several leading international rankings.

NOBEL PRIZES

Nobel Prize in Chemistry (1997) to **Emeritus Professor Jens Christian Skou**, MD, DMSc, for his work on the sodium-potassium pump.

Nobel Prize in Economics (2010) to **Professor Dale T. Mortensen**, Northwestern University and Aarhus University (now deceased), in recognition of his work on the labour market.

A RESEARCH-INTENSIVE UNIVERSITY

Two Nobel Prize laureates in recent times, fifteen basic research centres, eight interdisciplinary centres and numerous other research centres, both large and small, all contribute to Aarhus University's high position on the most important international ranking lists.

FACULTY OF ARTS

BASIC RESEARCH CENTRE

- Centre for Urban Network Evolutions (UrbNet)

OTHER MAJOR RESEARCH CENTRES*

- Aarhus University Research on the Anthropocene (AURA)
- Centre for Advanced Visualization and Interaction (CAVI)
- Centre for Teaching Development and Digital Media (TDM)
- Interacting Minds Centre (IMC)
- The National Centre for School Research (NCS)

INTERDISCIPLINARY CENTRE

- Participatory Information Technology Centre (PIT)



730

academic staff

278

PhD students

ARTS Faculty of Arts **BSS** Aarhus BSS **HE** Faculty of Health **ST** Faculty of Science and Technology

*This is not a complete list of the university's centres. Please see au.dk or faculty websites for complete lists.

**In collaboration with other faculties indicated by the abbreviations above.

AARHUS BSS

Aarhus BSS holds the international accreditations AACSB and AMBA, in addition to EQUIS for Aarhus BBS' business programmes.

BASIC RESEARCH CENTRE

- Center on Autobiographical Memory Research (CON AMORE)

OTHER MAJOR RESEARCH CENTRES*

- Centre for Alcohol and Drug Research
- Center for Research in Econometric Analysis of Time Series (CREATES)
- Dale T. Mortensen Centre

- Danish Centre for Studies in Research and Research Policy (CFA)
- MAPP Centre – Research on Value Creation in the Food Sector for Consumers, Industry and Society
- National Centre for Register-based Research (NCRR)
- The Tuborg Research Centre for Globalisation and Firms
- TrygFonden's Centre for Child Research

INTERDISCIPLINARY CENTRE

- Centre for Integrated Register-based Research (CIRRAU) (together with HE and ST**)



705

academic staff

222

PhD students

FACULTY OF HEALTH

BASIC RESEARCH CENTRES

- Center for Proteins in Memory (PROMEMO)
- Music in the Brain

OTHER MAJOR RESEARCH CENTRES*

- Center of Functionally Integrative Neuroscience (CFIN)
- Danish Center for Interventional Research in Radiation Oncology (CIRRO)
- MEMBRANES

- Mental Health in Primary Care (MEPRICA)
- The Danish Centre for Particle Therapy

INTERDISCIPLINARY CENTRES

- Centre for Integrative Sequencing (iSEQ) (together with ST and BSS**)
- MINDLab (cross-university research framework)
- The Lundbeck Foundation Initiative for Integrative Psychiatric Research (iPSYCH)



728

academic staff

656

PhD students

FACULTY OF SCIENCE AND TECHNOLOGY

BASIC RESEARCH CENTRES

- Carbon Dioxide Activation Center (CADIAC)
- Centre for Carbohydrate Recognition and Signalling (CARB)
- Center for Cellular Signal Patterns (CellPAT)
- Centre for DNA Nanotechnology (CDNA)
- Center for Electromicrobiology (CEM)
- The Center for Geomicrobiology
- Center for Massive Data Algorithmics (MADALGO)
- Center for Materials Crystallography (CMC)
- Centre for Membrane Pumps in Cells and Disease (PUMPKin)
- Centre for Quantum Geometry of Moduli Spaces (QGM)
- The Stellar Astrophysics Centre (SAC)

OTHER MAJOR RESEARCH CENTRES*

- Bioinformatics Research Centre (BiRC)
- Centre for Circular Bioeconomy (CBIO)
- Centre for Integrated Materials Research (iMAT)
- Danish-Chinese Centre for Proteases and Cancer
- International Centre for Research in Organic Food Systems (ICROFS)

INTERDISCIPLINARY CENTRES

- Arctic Research Centre (ARC) (with Arts, BSS, HE**)
- Danish Research Institute of Translational Neuroscience (DANDRITE) (with HE**)
- Interdisciplinary Nanoscience Centre (iNANO) (several departments involved)



1,652

academic staff

625

PhD students

STATE-OF-THE-ART RESEARCH FACILITIES – EXAMPLES

Aarhus University continually develops its physical research infrastructure. The goal is to provide the right conditions for scientific breakthroughs, and the facilities are in demand. They are used by the university's own researcher as well as national and international partners.

AURORA

A state-of-the-art, multipurpose research vessel which serves as a floating lab for biologists, geologists, geophysicists and other marine researchers. The vessel was launched in 2014 and is used in close cooperation with other universities, businesses and other partners.



Cognition and Behaviour Lab

A laboratory with state-of-the-art facilities for evidence-based research in human behaviour and cognition, primarily within economics, political science, psychology, linguistics, marketing and management. Among other equipment, the lab has two eye trackers that can monitor physiological parameters such as changes in pulse, breathing and muscle activity when the eye is subjected to different visual stimuli. Inaugurated in 2013.

Department of Clinical Epidemiology (KEA)

KEA offers researchers access to clinical databases and research registries where they can access data on all Danish patients, a possibility which puts AU's epidemiology research in the international elite.



The Digital Humanities Laboratory (DIGHUMLAB)

A digital research lab that works to promote digital resources and tools to humanities and social science researchers. DIGHUMLAB is a national consortium based at Aarhus University. The consortium members are Aalborg University, Aarhus University, the University of Copenhagen, the University of Southern Denmark and the Royal Library. Established in 2012.



Foulum: biogas and HTL plants

Foulum is Denmark's centre for the development of the bio-based economy. An advanced biogas plant and an HTL plant make it possible to perform groundbreaking research of decisive importance in relation to CO₂ reduction and energy supply.



Biobanks and Genome Sequencing

Using advanced sequencing technologies, a supercomputer can integrate and analyse large data sets from the unique Danish registry systems and biobanks combined with cell and animal models. The facilities are found at the iSEQ research centre, which is particularly focused on research to develop improved therapies for serious medical conditions including cancer and psychiatric disorders.



Hyperpolarisation MR

An advanced magnetic resonance scanner enhanced by hyperpolarisation that is used in medical imaging to diagnose and treat disease. This form of MRI is expected to lead to an increased understanding of – and better therapies for – some of the most common diseases in the Western world, such as cancer, diabetes, obesity and cardiovascular disease. Installed in 2014, Denmark was the third country in Europe to acquire MRI hyperpolarisation technology.



The SONG telescope on Tenerife

The prototype of an ultra-modern robotic telescope for studying stars and planetary systems. The telescope is the first in the Danish-led telescope design and construction project SONG. The telescope is owned and operated by Aarhus University and the University of Copenhagen in collaboration with the Instituto de Astrofísica de Canarias on Tenerife.



Research stations in Greenland

Aarhus University has two research stations in Greenland: Zackenberg Research Station in the north-east and Villum Research Station in the far north. The latter was inaugurated in 2015. These stations are a unique base for research into climate change in the High Arctic.



Danish Center for Ultrahigh Field NMR Spectroscopy

The largest of the centre's NMR spectrometers generates a magnetic field 500,000 times stronger than Earth's and is used to analyse substances at the molecular level. It is used in developing medicines and new materials as well as in food research. Inaugurated in 2015.

ROOM TO DEVELOP UNIQUE TALENTS

Particularly talented and motivated students must be given the opportunity to be challenged academically and to develop their talents – whether they point towards a career in research or a career involving leadership, innovation or entrepreneurship. The key words are quality and relevance, and talented students are offered special opportunities starting at Bachelor's degree level.

1,800

PHD STUDENTS

– TEN YEARS AGO, THERE WERE APPROX. 1,000

470

NEWLY ENROLLED PHD STUDENTS

27%

OF PHD STUDENTS AT AU ARE INTERNATIONAL

PHD DEGREE PROGRAMMES AT AARHUS UNIVERSITY:

- The programmes are internationally recognised.
- Graduates have excellent career prospects.
- PhD students publish in prestigious international journals*

AIAS – SUPPORTING THE BRIGHTEST TALENTS

AIAS - Aarhus Institute of Advanced Studies
AIAS promotes research of the highest quality with a focus on independent basic research and talent development within all fields. AIAS selects its fellows purely on the basis of their qualifications in an open competition and recruits talents of the highest international standard – from abroad and from Aarhus University. AIAS was established in 2013 and is the first institute of its kind in Denmark.



30

junior fellows

2

senior fellows

16

different
nationalities

A large, dense crowd of young people, likely students, is shown from a slightly elevated perspective. They are mostly wearing dark blue or navy clothing, suggesting a university event. The background is blurred, focusing attention on the individuals in the foreground. The overall atmosphere is busy and social.

GRADUATES ARE OUR MOST IMPORTANT CONTRIBUTION TO SOCIETY

Aarhus University educates graduates with strong academic competences and skillsets – which are in demand in academia as well as the public and private sectors. The keywords are research-based teaching in an attractive, open learning environment.

Attendance at CompanyDATING events at Aarhus BSS and the Faculty of Arts is record-high. At these events, companies and students speed date, discussing concrete job opportunities and joint projects. CompanyDATING is a good example of how Aarhus University is working to forge closer contact between students and the labour market. The entire university is working to incorporate the career perspective into every aspect of its degree programmes.



ACADEMIC
EXCELLENCE

+

A GOOD STUDY
ENVIRONMENT

=

ATTRACTIVE
DEGREE
PROGRAMMES

Each year, more than 7,000 new students start a degree programme at Aarhus University. Here, they encounter courses and activities that develop and challenge their mastery of every aspect of their chosen fields across disciplinary and national boundaries. The university offers over 200 degree programmes and 4,000 courses that meet the highest international standard. Over half of the university's Master's degree programmes are offered in English.

THE UNIVERSITY'S GRADUATES ARE IN DEMAND ON THE LABOUR MARKET

In the university's own employment survey from 2017, 95 per cent of the respondents with Master's degrees and 97 per cent with PhDs reported finding a job within one year of completing their degree.

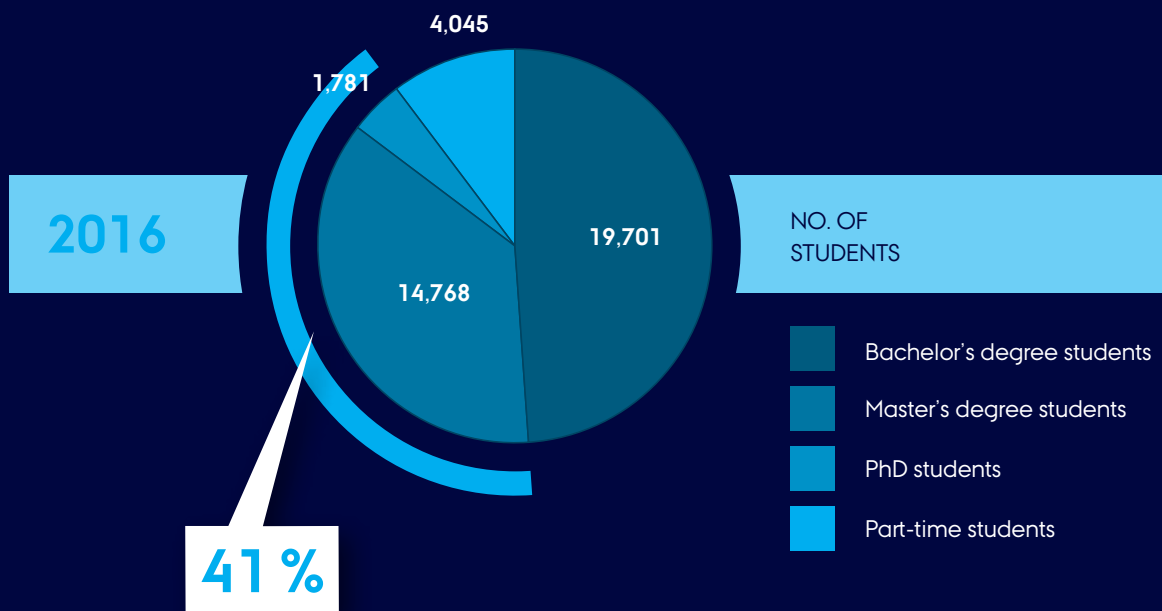
AN ENVIRONMENT WHERE STUDENTS THRIVE

- 88 per cent are satisfied with their degree programme and would recommend it to others
- 90 per cent are look forward to graduating and putting their education to use
- 87 per cent feel that their fellow students are helpful

RESEARCH TALENTS UNFOLD

Through targeted talent development, Aarhus University makes a focused effort to attract and stimulate the most motivated, talented students.

All of the faculties have models for encouraging talent development. For example, the Faculty of Science and Technology is in the process of developing and implementing an honours programme. The faculty's degree programmes offer elite courses, and students are awarded a diploma 'with distinction' on graduation.

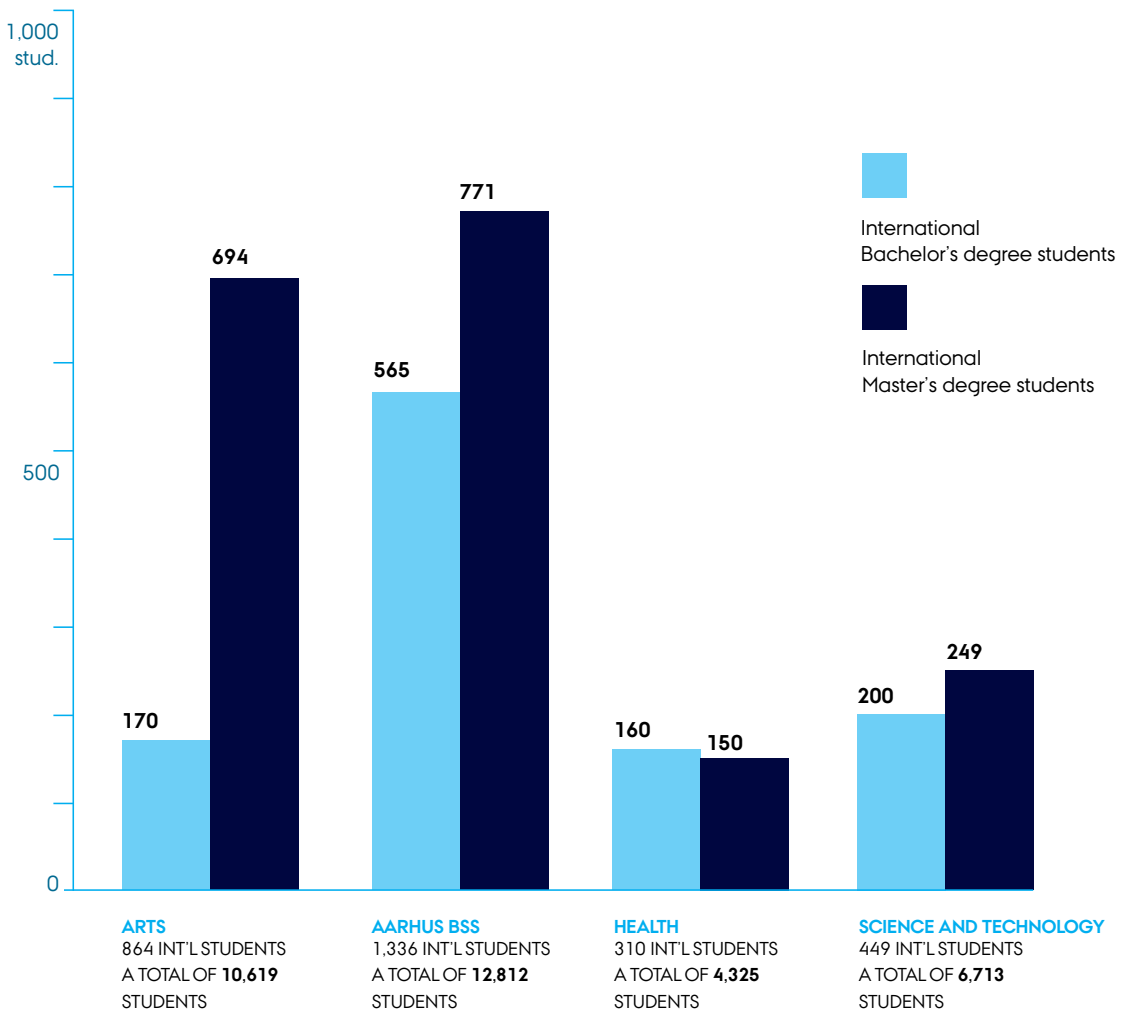


A LARGE PROPORTION ARE ENROLLED IN MASTER'S OR PHD PROGRAMMES

A STUDY ENVIRONMENT WITHOUT BORDERS

Attracting the best international students is an important goal that contributes to the university's academic excellence. At the same time, the many exchange agreements with other universities give students from Aarhus University varied opportunities to travel abroad and acquire the competences they need to compete on a globalised labour market.

3,000 INTERNATIONAL STUDENTS ON FULL DEGREE PROGRAMMES



EXCHANGE AGREEMENTS

Aarhus University has exchange agreements with over 50 different countries and is involved in prestigious international university networks and alliances.

- Coimbra Group
- Nordic Center Fudan
- Nordic Center India
- SANORD
- University of the Arctic
- Utrecht Network
- World 100 Reputation Network

AN INTERNATIONAL STUDY ENVIRONMENT

- More than 60 degree programmes in English
- Approx. 3,000 international students enrolled in full degree programmes
- Over 120 nationalities represented among full-time students
- Approx. 80 nationalities represented among academic staff

KNOWN FOR AN OPEN LEARNING AND STUDY ENVIRONMENT THAT ...

- is based on an informal and direct dialogue between the students and researchers
- promotes independent and critical thinking
- provides unique opportunities to combine subjects across traditional disciplinary boundaries
- students express a high degree of satisfaction with
- has close ties to the labour market and offers good opportunities for internships

1,600

EXCHANGE STUDENTS ABROAD. IN ADDITION APPROX. 400 STUDENTS ARRANGE STAYS ABROAD FINANCED BY OVERSEAS SCHOLARSHIPS FROM THE GOVERNMENT.

1,000

EXCHANGE STUDENTS AT AARHUS UNIVERSITY



COLLABORATION PUTS KNOWLEDGE TO WORK

Through close relationships with industry and business, government, organisations and civil society, Aarhus University contributes to society's ability to innovate and adapt. This contribution is founded on the research the university brings into play in its interaction with the world – locally, nationally and globally.

In 2017, the Faculty of Health is introducing a new talent development programme with a particular focus on innovation and product development in the pharmaceutical industry. The new Business and Innovation Honours Programme is an important element of a strategic initiative aimed at orienting the medical programme towards the industry. The



programme has been developed in dialogue with both academic and industry representatives. The Business and Innovation Honours Programme is just one of many examples of the major initiatives being launched across the university to intensify educational and research collaboration with business and industry.

KNOWLEDGE CREATES DEVELOPMENT AND GROWTH

Concrete, innovative activities in collaboration with public and private businesses and organisations founded on research-based knowledge make Aarhus University an attractive partner that contributes to growth, development and sustainability. Here are just a few examples of such partnerships.



Integrated psychiatric research

Aarhus University collaborates with the Lundbeck Foundation on the Initiative for Integrated Psychiatric Research (iPSYCH). The goal of the project is to identify the genetic and environmental factors involved in serious mental disorders such as schizophrenia, autism, ADHD and depression. Other partners in the project include the University of Copenhagen, Central Denmark Region, the Capital Region of Denmark and Statens Serum Institut.



Smart Cities

Aarhus University is an active participant in the Smart City network, which works to promote the development of Smart Cities in Denmark. The Smart City concept is about adapting and developing cities for the digital age. In 2015, the former Ministry of Housing, Urban and Rural Affairs established a think tank for Smart Cities chaired by Aarhus University.

520

NEW RESEARCH PARTNERSHIPS WITH PRIVATE BUSINESSES IN 2016

22%

OF NEWLY ENROLLED PHD STUDENTS AT AARHUS UNIVERSITY COMPLETE A PHD PROJECT IN COLLABORATION WITH THE PRIVATE SECTOR

The Centre for Collaborative Health

Builds bridges between researchers at Aarhus University and society. The centre's goal is to become an indispensable advisor and partner in developing solutions to Denmark's healthcare and welfare challenges.

AARHUS

European Capital of Culture 2017 in Aarhus

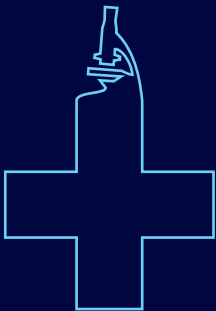
Aarhus University is involved in a partnership with Aarhus 2017 to produce a research-based analysis of the significance and effect of the European Capital of Culture status on cities, in relation to cultural life, image and identity as well as economic, social and political effects. The analysis will draw on existing research from previous European Capitals of Culture. Students as well as researchers are participating in the project.

The Centre for Small and Medium-Sized Enterprises

In cooperation with Nykredit and PwC, the Department of Law has established the Knowledge Forum for Small and Medium-sized Businesses (SMEs), where researchers at Aarhus University are exploring how to best strengthen growth and development in SMEs. SMEs are the backbone of the Danish economy, and the goal is to develop tools tailored to support their development.

Jobs for the accompanying partners of researchers

Aarhus University has entered into an agreement with Business Region Aarhus to offer international researchers' accompanying partners relevant jobs in the region. This will contribute to attracting leading international researchers to the university.



One point of access to clinical trials

An initiative which makes it easier for the pharmaceutical industry and researchers at the Department of Clinical Medicine to work together on clinical trials in Central Denmark Region. The goal is to support medical progress for the benefit of patients.



Food research

In 2014, Arla committed to a five-year research collaboration with Aarhus University and University of Copenhagen. The goal is to investigate how dairy products can contribute to strengthening the immune system as well as preventing malnutrition and diseases such as type 2 diabetes.

Moesgaard Museum

There is a close partnership between the new Moesgaard Museum and Aarhus University that exploits the synergy between the museum's experts and the university's researchers and students. For example, students can submit assignments and projects in the form of concrete exhibitions they create in one of the museum's permanent exhibition spaces.

MADE

In the association MADE – Manufacturing Academy of Denmark – the Department of Computer Science and the Department of Engineering collaborate with businesses, other universities and GTS institutes to promote manufacturing in Denmark through research, innovation and education. The association focuses on such themes as the effective integration of information and communications technology into manufacturing processes.

RESEARCHERS ADVISE GOVERNMENT

Aarhus University researchers from a variety of fields advise government agencies and institutions. These consultancy activities help society find innovative solutions, particularly in relation to the environment, energy, food and agriculture, as well as health and education.

EUR 59 MILLION

INVESTED BY GOVERNMENT AGENCIES IN RESEARCH-BASED CONSULTANCY FROM AARHUS UNIVERSITY IN 2016. EACH TIME THE PUBLIC SECTOR INVESTS ONE MILLION KRONER IN CONSULTANCY, RESEARCHERS AT AARHUS UNIVERSITY ARE ABLE TO GENERATE AN ADDITIONAL ONE AND A HALF MILLION FROM EXTERNAL SOURCES.

DCA – DANISH CENTRE FOR FOOD AND AGRICULTURE

According to an agreement with the Ministry of Environment and Food of Denmark, DCA performs research-based consultancy for the ministry and relevant government agencies within agriculture, food and environment. Some of this work is carried out in collaboration with researchers at Aarhus BSS. DCA advises the ministry on how to produce healthy, high-quality food, the demand for bio-based energy and materials and issues related to environment, nature and climate.

DCE – DANISH CENTRE FOR ENVIRONMENT AND ENERGY

DCE provides research-based consultancy and expertise on nature, the environment and energy. Aarhus University's most important consultancy contracts are with the Ministry of Environment and Food of Denmark, the Danish Ministry of Energy, Utilities and Climate and the Environmental Agency for Mineral Resource Activities in Greenland. DCE's objective is to contribute to sustainable development both nationally and internationally.

DEPARTMENT OF FORENSIC MEDICINE

The Department of Forensic Medicine is located at Aarhus University Hospital and assists police districts throughout most of Jutland. The department's goal is to provide the criminal justice system with high-quality investigations, for which it has been internationally recognised.

NATIONAL CENTRE FOR SCHOOL RESEARCH (NCS)*

The National Centre for School Research (NCS) is a collaborative venture established in 2016 involving the Danish School of Education, Aarhus University and VIA University College. The centre is the locus of a national research collaboration aimed at strengthening Danish research on daycare and schools, contributing to better coordination and closer collaboration and ensuring that the research performed benefits and is communicated to daycare institutions and schools all over the country.

DANISH CENTRE FOR STUDIES IN RESEARCH AND RESEARCH POLICY*

The centre, which is affiliated with the Department of Political Science, performs evaluations and analyses for Danish and international government agencies and institutions and organisations. The centre's objective is to provide society with the foundation for informed decision-making and innovation solutions, particularly with regard to research, innovation and university policy.

INTERNATIONAL ASSOCIATION FOR THE EVALUATION OF EDUCATIONAL ACHIEVEMENT (IEA)*

The Danish School of Education (DPU) is a member of the International Association for the Evaluation of Educational Achievement (IEA). Under the auspices of the IEA, participating researchers from Aarhus University participate in designing and carrying out evaluations of education throughout the world. The aim is to ensure the best possible school education.

CENTRE FOR ALCOHOL AND DRUG RESEARCH*

The centre is affiliated with the Department of Psychology and Behavioural Sciences and works with alcohol and drug abuse research and teaching, as well as research dissemination. The centre works with ministries, government agencies, and the regions. The centre's goal is to develop and provide knowledge and tools which can contribute to improving both treatment and prevention of drug and alcohol abuse in Denmark and internationally.

*This initiative is not included in the EUR 59 million highlighted on p. 28.

LIFELONG LEARNING UPLIFTS SOCIETY

As a key bearer of knowledge and culture, Aarhus University helps raise general levels of education and competencies in society. To a high degree, this is a question of strengthening collaboration with citizens, associations and organisations.

4,000

STUDENTS ARE ENROLLED IN ONE OF THE UNIVERSITY'S APPROX.
40 CONTINUING AND FURTHER EDUCATION PROGRAMMES

DISTINGUISHED ALUMNI AT AARHUS UNIVERSITY

2017

Niels Due Jensen

Former group president and CEO of Grundfos
Mechanical engineer, 1971

2016

Anne Thomassen

Former chief medical officer, Aarhus Hospital
and former chair of the Danish Cancer Society
DMSc, 1992

2015

Sten Scheibye

Chair of Novo A/S, the
Novo Nordisk Foundation and other boards
PhD in organic chemistry, 1981

2014

Jørgen Vig Knudstorp

CEO of LEGO
PhD in economics, 1998

2013

Jens Erik Sørensen

Director of ARoS Aarhus Art Museum
MA in art history, 1979

2012

Birgit Storgaard Madsen

Former ambassador, now deceased
MA in anthropology, 1969

2011

Lene Vestergaard Hau

Professor of physics at Harvard University
PhD in physics, 1991

2010

Nils Smedegaard Andersen

Partner and CEO, A. P. Møller-Mærsk
MSc in economics, 1982

2009

Anders Fogh Rasmussen

Former prime minister and secretary general of NATO
MSc in economics, 1978

2008

HRH Crown Prince Frederik of Denmark

MSc in political science, 1995

THE DANISH UNIVERSITY EXTENSION IS FOR EVERYONE

Each year, the Danish University Extension offers the public over 900 lectures, events and festivals featuring the latest knowledge from the research world. The Danish University Extension works closely with Aarhus University and has over 65,000 course participants annually in Aarhus, Herning and Emdrup (Copenhagen).

AARHUS UNIVERSITY PRESS

Publishes approx. 60 new books each year and has almost 2,000 titles in its catalogue. Aarhus University Press successfully reaches the general public with free e-books and the popular 'Tankepauser' (reflections) book series introducing a non-academic audience to the latest research.

VISIT THE UNIVERSITY'S MUSEUMS

- **Museum of Ancient Art** – collection of Mediterranean antiquities, Aarhus
- **Botanical Gardens and Greenhouses** – collections of plants from different ecozones, Aarhus
- **Ole Rømer Observatory** – public access to large telescopes, Aarhus
- **Steno Museum** – planetarium, exhibits and more, Aarhus

STUDENT ONCE – ALUM FOR LIFE

The end of your studies doesn't have to mean the end of your relationship with Aarhus University. The alumni network gives alums opportunities for lifelong learning, inspiration and meaningful career networks. Since 2008, Aarhus University has named a distinguished alum each year: a former student who has made a particularly significant contribution to society.



500 years ago, the Protestant Reformation transformed the course of European and Danish history. In 2017, the Reformation and its consequences for Danish society was the theme of MatchPoints 2017, the university's major public research and debate conference. Her Majesty Queen Margrethe II participated in the opening of the conference, at which leading researchers from Denmark and abroad participated in debates and held talks for an audience of over 400. The conference was arranged by Aarhus University in collaboration with the City of Aarhus and the Danish University Extension on behalf of the national Presidium of the 500th Reformation Anniversary 2017.

Velkomst ved Hendes Majestæt Dronning Margrethe II



The Reformation and the history of its effects on society is a vibrant field of research at Aarhus University, for example at the interdisciplinary research centre LUMEN, which focuses on the Lutheran Reformation and its influence on theology, mentality, culture and society. Aarhus University is also engaged in Rethink Reformation, a series of cultural and research events organised in collaboration with Aarhus Cathedral and the Danish University Extension in connection with European Capital of Culture Aarhus 2017.



ONE UNIVERSITY – MANY LOCATIONS

Aarhus University has its natural centre in Aarhus, but the university has locations all over Denmark, with research activities in several other cities in Denmark, as well as and campuses in Emdrup and Herning in addition to Aarhus. The common denominator is a high standard of academic excellence and vibrant campus life with strong traditions.

The University Park in Aarhus is an integrated part of the city centre, and a central gathering place and recreational area for students from all disciplines and of all nationalities.



AARHUS UNIVERSITY'S LOCATIONS

● RESEARCH AND EDUCATION

Aarhus: The main campus for Aarhus University and the four faculties (Arts, Aarhus BSS, Health, and Science and Technology), approx. 5,900 employees and 31,500 students*

Emdrup (Copenhagen): The Danish School of Education (DPU), approx. 330 employees and 1,900 students*

Herning: Department of Business Development and Technology as well as engineering programmes under the Faculty of Science and Technology, approx. 100 employees and 1,000 students*

● RESEARCH ACTIVITIES

Flakkebjerg: Department of Agroecology and Department of Molecular Biology and Genetics, approx. 140 employees

Kalø/Rønde: Department of Bioscience, approx. 50 employees

Roskilde: Depts. of Bioscience, Environmental Science and Geoscience as well as the Danish Centre for Environment and Energy (DCE) approx. 250 employees

Silkeborg: Department of Bioscience, approx. 100 employees

Viborg/Foulum: Depts. of Food Science, Agroecology, Animal Science and Engineering, as well as Molecular Biology and Genetics and the Danish Centre for Food and Agriculture (DCA), approx. 530 employees.

Årlev: Department of Food Science, approx. 70 employees

● OTHERS

Askov: Experimental station

Horsens: Bygholm, Department of Engineering

Jyndevad: Experimental station

Nuuk: Arctic Research Centre (ARC)

Rønbjerg: Rønbjerg Marine Biology Field Station

Tenerife: SONG telescope

Villum Research Station: Research station in Northern Greenland

Zackenbergl: Experimental station in Northeast Greenland

*These figures include only Bachelor's and Master's degree students.

WHERE

Aarhus University has campuses in three cities in Denmark and research activities at 17 different locations in Denmark, Greenland and on Tenerife.



DENMARK



CAMPUSES IN THREE CITIES

AARHUS

The Aarhus campus locations are spread out over much of the city, with the University Park and its yellow-brick buildings as the historical core where many of the year's traditional events take place, such as the annual Regatta, the annual celebration and various award ceremonies. All four faculties are represented in the University Park, but the university also has significant activities on Fuglesangs Allé (business), in Katrinebjerg (IT and engineering), on the waterfront at Navitas (engineering), at Moesgaard Manor (anthropology and archaeology), and in Frederiksbjerg (sport science).

In 2019, Aarhus University will begin expanding its campus in Aarhus: parts of the university will gradually be relocated to the site of the former municipal hospital which was the university's neighbour for many years. The property was recently purchased by FEAS (the Aarhus University Research Foundation's property company), which will lease it to Aarhus University. This expansion will enable the university to develop and strengthen its campus in Aarhus as an attractive and future-oriented research and study environment. The vision behind the project is to integrate urban life, shops, business, housing and institutions in order to create close links to the surrounding neighbourhoods. The final plan for the project is not yet in place, but the overarching concept has been adopted: the existing overall layout of the property will be preserved, the development must be integrated with the existing campus and the existing red brick building facades, roofs and paving will be retained.



31,500
students*



Visualization of what the development might look like By AART Architects.

*These figures include only Bachelor's and Master's degree students.

AARHUS: A YOUNG, DYNAMIC CITY



GEOGRAPHY AND POPULATION

- Denmark's second-largest city
- Located on the Jutland peninsula on the coast next to forests and countryside
- 335,000 inhabitants and 1.2 million people in the greater Aarhus metropolitan area
- Well-developed infrastructure for public transportation, cycling and private vehicles
- Average age of inhabitants approx. 37 years, among the lowest in Denmark
- The highest concentration of students in Denmark

LOCAL AND INTERNATIONAL

- Known for its informal and hospitable atmosphere
- Good conditions for international employees and their families
- International kindergarten, school and upper secondary school
- International Community, an organisation that provides practical help in relation to housing, jobs, leisure activities, social networks and more

A THRIVING BUSINESS SECTOR

- Home to nearly 40,000 companies
- Strengths within several sectors, in particular ICT, cleantech, health, food, architecture, design and fashion
- Good opportunities for collaboration involving business, education, research, public administration and other partners
- Large companies with offices, development divisions or headquarters in Aarhus include Dupont, Google, IBM, CSC, Bestseller, Arla, Vestas, JYSK, Terma and Jyllands-Posten
- The Port of Aarhus is Denmark's largest container port and in the top 100 world-wide

A RICH CULTURAL LIFE

- Aarhus has been named European Capital of Culture 2017
- World-class museums (ARoS Art Museum, Moesgaard Museum and Den Gamle By ('the Old Town'))
- The largest cultural centre in Scandinavia, the Concert Hall Aarhus
- Location of HRM Queen Margrethe's summer residence Marselisborg Castle
- From Michelin restaurants to casual cafés
- Concerts, theatre, dance and festivals all year round
- Lots of recreational areas

EMDRUP

The Emdrup campus in northwestern Copenhagen is the location of the majority of the Danish School of Education's activities. Good campus facilities combined with a shared academic focus across degree programmes makes Emdrup a closely knit academic community. AU Library, Emdrup Campus (the Danish library of education) has a collection of approx. 800,000 books and periodicals.



Photo: Lise Balsby



1,900
students*

DPU is Denmark's largest university environment for basic and applied research on education.

HERNING

In Herning, the focus is on engineering, business administration and management in a study environment with students from many different countries. Herning Campus has a strong tradition of collaboration with business and industry and has an award-winning entrepreneurial environment.



Photo: Maria Randima Sørensen



1,000
students*

The Herning campus features new, modern buildings designed by architect Henning Larsen.

*These figures include only Bachelor's and Master's degree students.

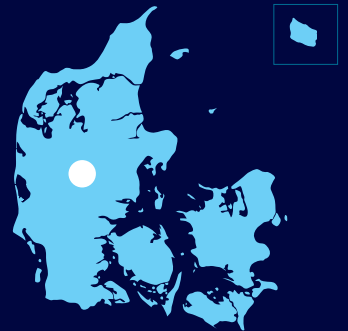
AARHUS UNIVERSITY IN THE CAPITAL

- Emdrup is located in northwest Copenhagen, Denmark's capital city.
- Copenhagen has more than 1,3 million inhabitants
- The city is located on the island Zealand and is nation's cultural, political and economic centre
- An important transport hub with the largest airport in Scandinavia, the largest train station in Denmark and one of its largest ports
- Location of major cultural institutions such as Denmark's National Stadium, the National Museum of Denmark and the Royal Danish Opera
- There are good public transport connections between Emdrup and downtown Copenhagen



HERNING: A GROWING CITY

- Around 48,000 inhabitants
- Located approx. 80 km from Aarhus in western Jutland
- Hosts many events and conventions and is home to many successful businesses
- Location of Denmark's only multi-purpose arena (15,000 seats)
- Future location of one of Central Denmark Region's two new mega-hospitals (the other is under construction in Aarhus)





The Regatta

Each year, students at Aarhus University organise the legendary regatta, which is today one of Northern Europe's largest student event, attracting more than 20,000 students. The regatta combines a 'race' in rubber boats with beer relay races. It was held for the first time in 1991 as a competition between



medical students and dentistry students, and has since become a battle involving many different degree programmes. The prize is honour and the trophy 'the Golden Bedpan'.



Aarhus University is a vibrant university which prioritises both breadth and depth in research and education.

All photos were taken by photographers at Aarhus University, unless otherwise indicated.



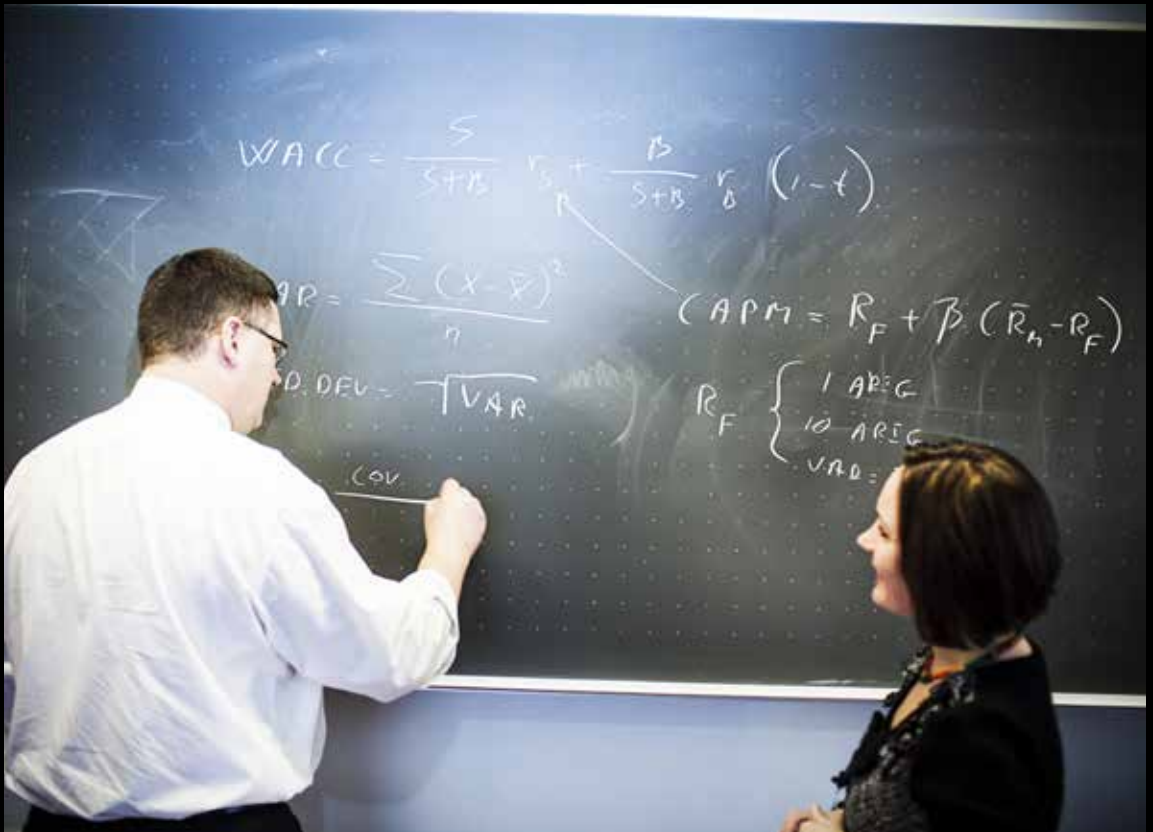




Photo: Mads Fredslund Andersen



Photo: Lars Holst Hansen





Find out more at au.dk/en
or follow Aarhus University on



PROFILE ²⁰¹⁷/₂₀₁₈

Editor

Camilla Schrøder, Rector's Office

Design and layout

Astrid Friis Reitzel, Events and Communication Support

Photos

Lars Kruse, Jesper Rais, Anders Trærup, Melissa B. Kirkeby Yildirim, Roar Lava Paaske, Lise Balsby eller Maria Randima Sørensen, Events and Communication Support, unless otherwise stated

Translation

Lenore Messick, Events and Communication Support

Proofreading

Annette Kvernød, Events and Communication Support

Printer

vahle+ nikolaisen

Print run UK

3.500 copies

ISBN 978-87-92829-61-0

ISSN 2246-6010

This publication was printed with vegetable ink on Munken Polar paper and at a Nordic Council Swan Ecolabel-approved printing office. The paper is derived from FSC®-approved sustainable forestry and other controlled sources.



The image features a dark blue background on the left and a light blue background on the right. A vertical line separates the two. On the right side, there are several geometric shapes: a dark blue vertical bar, a light blue horizontal bar, and a dark blue vertical bar with a light blue arched opening on its right side.

Aarhus University
Nordre Ringgade 1
DK-8000 Aarhus C
Denmark

+45 8715 0000
au@au.dk
au.dk/en